



**4922 Winterbury  
Mays Landing, NJ 08330**

**Asking \$234,900.00**



**COMMENTS**

Village at Hardings Run II Charming Townhouse with 2 Bedrooms plus a Loft. Discover this beautifully maintained townhouse that offers a blend of comfort, privacy, and style. Featuring 2 bedrooms plus a loft, this home is perfect for a variety of lifestyles, whether you're starting a new chapter, downsizing, or looking for a peaceful retreat nestled in nature. -Main Features: Waterproof laminate floors grace the main entry and kitchen and powder room, providing durability and ease of maintenance. Carpet complements the other living areas, adding warmth and comfort, while tile in the main bathroom brings practicality and style. -Privacy: Situated against wooded areas with no homes behind it, the property offers unparalleled privacy and tranquility. Enjoy serene views and peaceful moments from the living room and the deck, creating an ideal space to unwind. -Living Spaces: The kitchen features an open half-wall design, giving the space a bright and airy feeling. Perfect for entertaining or casual meals the owner is willing to leave both the kitchen bar stool height expanding table and the dining table in the dining area. The living room has wall unit shelves that the owner is again willing to leave if the buyer wishes. The laundry closet, with the gas dryer and washing machine are conveniently located near the front door on the main level, enhancing the practicality of this home. The primary bedroom has its own bathroom entrance allowing for privacy when needed. Condition: This townhouse has been lovingly maintained and is truly turnkey, ready for you to move in and make it your own. While the walls offer a neutral palette, any adjustments such as paint colors can be tailored to fit your personal style. Additional Details: Loft: An additional loft space offers versatility, whether for a home office, reading nook, or play area. - Outdoor Space: A back deck invites you to enjoy the beauty of the wooded surroundings. - The \$355/month Condo Fee includes water and sewer, full-time on-site Property Management services, snow removal, lawn care as well as common area maintenance. The Community offers a salt water pool which is closed for the 2025 season due to extensive repairs that need to be done. The community also has a playground and tennis court. - Assigned parking for one car and additional parking on a first come first serve basis. - In conclusion, this townhouse offers a rare combination of convenience, comfort, and natural beauty. With its well-thought-out design and peaceful surroundings, it's more than just a home—it's a retreat. Don't miss the opportunity to make this exceptional property yours! - There are 2 cats in the property so the Seller will provide entry for showings, but will step out during the showing. \*\*The sale is contingent on Seller finding suitable housing. The search is already underway. Showings Tuesday & Friday's after 10:00am, any other days after 3pm. NO showing on Father's Day.

**PROPERTY DETAILS**

Exterior	ParkingGarage	OtherRooms	InteriorFeatures
Brick Face	None	Dining Area	Pets Allowed

# Berger Realty

• Since 1928 •



Berger Realty, Inc.  
3160 Asbury Avenue  
Ocean City, NJ 08226  
1-877-237-4371 / 609-399-0076  
✉ [info@bergerrealty.com](mailto:info@bergerrealty.com)



Vinyl

Eat In Kitchen  
Loft

Wall to Wall Carpet

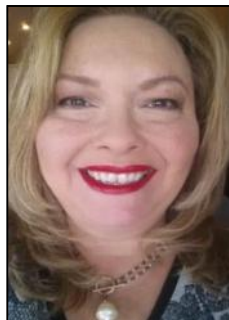
Heating  
Forced Air  
Gas-Natural

Cooling  
Ceiling Fan(s)  
Central  
Electric

HotWater  
Gas

Water  
Public Water

Sewer  
Public Sewer



Ask for Theresa Maina  
Berger Realty Inc  
3160 Asbury Avenue, Ocean City  
Call: 609-399-0076  
Email to: [tam@bergerrealty.com](mailto:tam@bergerrealty.com)

