

Berger Realty

Since 1928



Berger Realty, Inc.
3160 Asbury Avenue
Ocean City, NJ 08226
1-877-237-4371 / 609-399-0076
info@bergerrealty.com



1923 Bacharach Blvd
Atlantic City, NJ 08401

Asking \$1,900,000.00



SJSRMLS

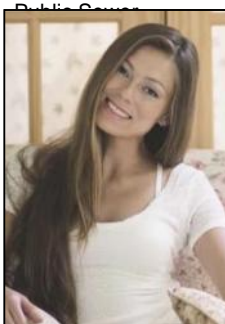
COMMENTS

Truly one of a kind property located directly behind the AC Convention Center with easy access from the AC Expressway Tunnel. This property in the past has been used as a distribution center, school/training center, medical offices, rehabilitation center & clinic and public parking. Land uses and other information is on file for all these uses. The property can be developed for residential development boasting 1.5 acres +/- since it is located in a residential zone. Easy to show and being sold AS-IS condition.

PROPERTY DETAILS

Exterior	ParkingGarage	InteriorFeatures	Basement
Masonry	11 or More Spaces	220 Volt Electricity	Slab
Stucco	Off Street	Restroom	
	Paved	Storage	
Heating	Cooling	HotWater	Water
Forced Air	Central	Gas	Public
Gas-Natural	Electric		
Multi-Zoned	Multi-Zoned		

Sewer



Ask for Margarita Kobilianets
Berger Realty Inc
3160 Asbury Avenue, Ocean City
Call: 609-399-0076
Email to: mak@bergerrealty.com

