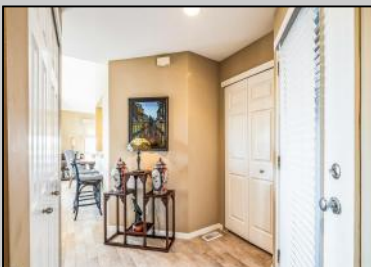


Berger Realty

Since 1928



Berger Realty, Inc.
3160 Asbury Avenue
Ocean City, NJ 08226
1-877-237-4371 / 609-399-0076
info@bergerrealty.com



103 Easterly Dr.
Ocean City, NJ 08226

Asking \$699,000.00



COMMENTS

Just in time for Summer....Ocean Reef corner top floor 3 bedroom and 2 full bath condo. This beauty features open views and excellent sun exposure. Updated kitchen, baths, and flooring make this Ocean Reef beauty move in ready. Enjoy sitting out on the wrap-around deck with meadow and water views. Ocean Reef has two pools, club house, tennis and pickle-ball, and access to boat docks and slips. A great property by the water can be yours!

PROPERTY DETAILS

Exterior Stucco Wood	ParkingGarage None	OtherRooms Dining Area	InteriorFeatures Cathedral Ceiling(s) Fireplace(s) Kitchen Center Island Master Bath Wall to Wall Carpet
Heating Forced Air	Cooling Central	HotWater Gas	Water Private
Sewer Private			



Ask for Sean McGinnis
Berger Realty Inc
3160 Asbury Avenue, Ocean City
Call: 609-399-0076
Email to: smc@bergerrealty.com

