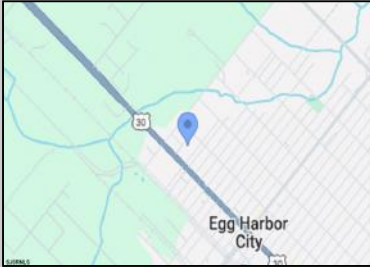


# Berger Realty

Since 1928



Berger Realty, Inc.  
3160 Asbury Avenue  
Ocean City, NJ 08226  
1-877-237-4371 / 609-399-0076  
info@bergerrealty.com



111 NEW YORK AVENUE  
Egg Harbor City, NJ 08215

Asking \$1,795,000.00



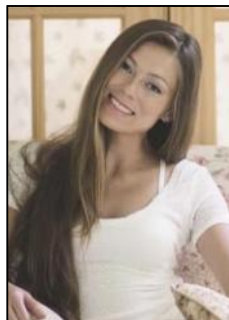
SJSRMLS

#### COMMENTS

GREAT RENOVATED 20,000 SQ FT BUILDING ON 3.83 ACRES LOCATED ON MAJOR HIGHWAY IS APPROVED FOR INDOOR CANNABIS GROWING OPERATIONS AND ALSO APPROVED FOR 100+ CAR DEALERS WITH PARKING FOR 350+ CARS FOR ONLINE CAR SALES. BUILDING IS ALSO READY FOR STORAGE AND MULTIPLE OTHER USES. FOR SALE OR LEASE. AVAILABLE IMMEDIATELY.

#### PROPERTY DETAILS

OutsideFeatures	ParkingGarage	Water	Sewer
Loading Dock	11 or More Spaces	Public	Public Sewer



Ask for Margarita Kobilianets  
Berger Realty Inc  
3160 Asbury Avenue, Ocean City  
Call: 609-399-0076  
Email to: mak@bergerrealty.com

