

Berger Realty

Since 1928



Berger Realty, Inc.
3160 Asbury Avenue
Ocean City, NJ 08226
1-877-237-4371 / 609-399-0076
info@bergerrealty.com



236 Roseann Ave
North Cape May, NJ 08204

Asking \$525,000.00

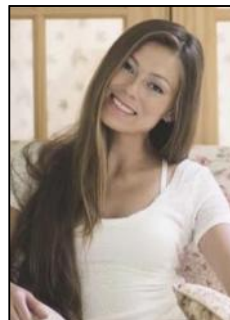


COMMENTS

Ready to Move In!! This split level sits on a nice corner lot in North Cape May. 3 nice size bedrooms, 2 Full Bathrooms, Living Room, Dining Room, Kitchen, Family Room or 4th Bedroom. Dining room has sliding doors that opens to Sunroom with bar area and mini refrigerator. Attached is a one car garage. The outside has 2 sheds and a wood patio! Perfect for year round use or a summer retreat. Also can Airbnb. Close to the Bay and a few miles from Cape May, Wildwood Beaches. Easy to Show!

PROPERTY DETAILS

Exterior	Outside Features	Parking/Garage	Other Rooms
Vinyl	Patio	One Car	Dining Room
	Shed	Attached Garage	Laundry/Utility Room
			Recreation/Family
			Storage Attic
Interior Features	Appliances Included	Also Included	Basement
Carbon Monoxide Detector	Dishwasher	Blinds	Crawl Space
Smoke/Fire Alarm	Dryer	Curtains	
	Electric Stove		
	Microwave		
	Refrigerator		
	Washer		



Ask for Margarita Kobilianets
Berger Realty Inc.
3160 Asbury Avenue, Ocean City
Call: 609-399-0076
Email to: mak@bergerrealty.com

