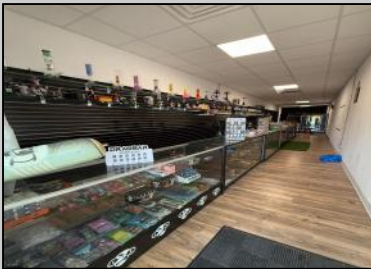


# Berger Realty

Since 1920



Berger Realty, Inc.  
3160 Asbury Avenue  
Ocean City, NJ 08226  
1-877-237-4371 / 609-399-0076  
info@bergerrealty.com



513 1/2 Landis  
Vineland, NJ 08360

Asking \$99,000.00



## COMMENTS

Opportunity Knocks on E Landis Avenue! Welcome to 513½ E Landis Ave, a compact commercial gem in the heart of Vineland's bustling downtown corridor. With just over 800 square feet of prime retail space, this storefront is the perfect opportunity for entrepreneurs, boutique owners, or small business startups looking to plant roots without breaking the bank. Surrounded by thriving local businesses, this location sees steady vehicle and foot traffic and enjoys excellent visibility on one of Vineland's most vibrant commercial stretches — a true "Main Street, USA" atmosphere. Whether you're launching a new concept or relocating an existing one, this affordable space puts you right in the center of the action. The possibilities are endless — pop-up retail, studio, gallery, repair shop, or office — all within a walkable, high-traffic district that supports small business success. Don't miss out on this high-potential, low-overhead opportunity!

## PROPERTY DETAILS

Exterior Brick	ParkingGarage Other (See Remarks)	InteriorFeatures 220 Volt Electricity Restroom Storage	Basement Unfinished
Heating Forced Air	Cooling Window Units	HotWater Gas	Water Public



Ask for Donna Brown  
Berger Realty Inc  
3160 Asbury Avenue, Ocean City  
Call: 609-399-0076  
Email to: dmb@bergerrealty.com

