

# Berger Realty

Since 1928



Berger Realty, Inc.  
3160 Asbury Avenue  
Ocean City, NJ 08226  
1-877-237-4371 / 609-399-0076  
info@bergerrealty.com



203 POMONA  
Galloway Township, NJ 08205

Asking \$1,800,000.00

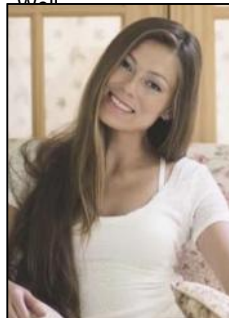


#### COMMENTS

ITS YOUR OWN 20 ACRE LAKE WITH 5000 SQ FT GARAGE AND STORAGE SHEDS THE PROPERTY IS PRESENTLY BEING USED AS A LIGHT INDUSTRIAL MULCH FACILITY. ONE OF FEW PLACES IN SOUTH JERSEY LICENSED TO DO SO. THIS PROPERTY IS GREAT FOR LANDSCAPING BUSINESS OR EQUIPMENT ,FLEET STORAGE OF VEHICLES THE OWNER HAS A LOT BEING SOLD SEPARATE ON 3 ACRES WITH SEPTIC ALREADY INSTALLED AND READY TO BUILD YOUR HOME FOR ADDITIONAL PRICE, ITS ONLY THE PROPERTY BEING SOLD BUT THE OWNER WILL WORK WITH BUYER ON THE OPERATIONS OF THE MULCH IF NECESSARY

#### PROPERTY DETAILS

Exterior Block	OutsideFeatures Security Light/System Truck Door	ParkingGarage 11 or More Spaces	InteriorFeatures 220 Volt Electricity
Basement Slab	Heating Gas-Natural Space/Wall/Floor	Cooling Wall Units	HotWater Gas
Water Well	Sewer Septic		



Ask for Margarita Kobilianets  
Berger Realty Inc  
3160 Asbury Avenue, Ocean City  
Call: 609-399-0076  
Email to: mak@bergerrealty.com

