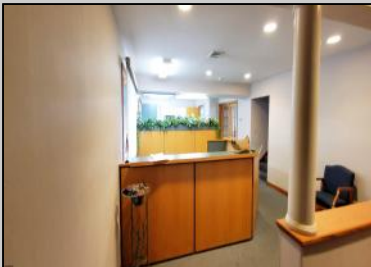




1138 Chestnut Ave
Vineland, NJ 08360

Asking \$269,000.00



COMMENTS

Elevate your business at 1138 E. Chestnut Avenue, Unit 7C—a sophisticated ~2,300 sq ft office condo designed for modern professionals. This turn-key workspace blends sleek, style with flexible layouts, ideal for startups or expanding firms focused on productivity and collaboration. Featuring a stylish glass-entry foyer, alarm system, and a newly installed roof (2yrs), this unit is move-in ready. Situated in a well-maintained complex with ample parking and abundant natural light, it's primed for success. Schedule your private tour today to experience this premier office space. Association fee is \$3,000/Yr - paid bi-annually.

PROPERTY DETAILS

Exterior Frame/Wood Vinyl	OutsideFeatures Security Light/System Sign	ParkingGarage 11 or More Spaces Off Street Paved	InteriorFeatures 220 Volt Electricity Handicap Features Restroom Security System Smoke/Fire Alarm
Basement Slab	Heating Forced Air Gas-Natural Multi-Zoned	Cooling Central Electric Multi-Zoned Wall Units	HotWater Gas
Water Public	Sewer Public Sewer		

