

# Berger Realty

Since 1928



Berger Realty, Inc.  
3160 Asbury Avenue  
Ocean City, NJ 08226  
1-877-237-4371 / 609-399-0076  
info@bergerrealty.com



226 Bethel  
Somers Point, NJ 08244

Asking \$375,000.00



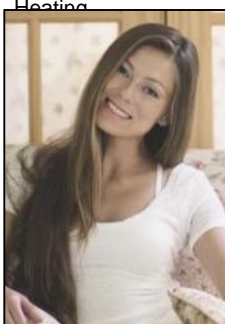
SJSRMLS

## COMMENTS

Welcome to this delightful 3-bedroom, 2-bathroom ranch home in Somers Point! This charming property features a convenient horseshoe driveway and an open floor plan, boasting approximately 1,144 square feet of comfortable living space. The inviting living room is illuminated by a large window that allows natural light to fill the home, while the kitchen is equipped with stylish built-in woodgrain cabinets and adjacent dining area. Step outside to discover a relaxing deck—perfect for unwinding in the fresh air and sunlight—overlooking a spacious backyard that offers plenty of room for outdoor activities and potential expansion. Don't miss out on this fantastic opportunity! Schedule your showing today! Being sold AS IS, WHERE IS, Buyer is responsible for all inspections, CO, and certifications. All information and property details set forth in this listing, including all utilities and all room dimensions which are approximate, are deemed reliable but not guaranteed and should be independently verified if any person intends to engage in a transaction based upon it. Seller/current owner does not represent and/or guarantee that all property information and details have been provided in this MLS listing.

## PROPERTY DETAILS

Exterior	OutsideFeatures	ParkingGarage	Basement
Vinyl	Deck Shed	None	Crawl Space
Heating	Cooling	HotWater	Water
	Central	Electric	Public



Ask for Margarita Kobilianets

Berger Realty Inc  
3160 Asbury Avenue, Ocean City  
Call: 609-399-0076  
Email to: mak@bergerrealty.com

