

Berger Realty

Since 1928



Berger Realty, Inc.
3160 Asbury Avenue
Ocean City, NJ 08226
1-877-237-4371 / 609-399-0076
info@bergerrealty.com



16 Holly Creek
Port Republic, NJ 08241

Asking \$999,777.00

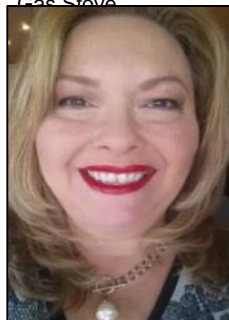


COMMENTS

PORT REPUBLIC NEW LISTING ALERT4 BED 3.5 BATH 3,076 SQ FT MODERN RANCH FARMHOUSE ***10' CEILINGS MINIMUM THROUGHOUT, 12' IN FAMILY ROOM/KITCHEN**2 CAR GARAGE***COVERED FRONT PORCH***LANDSCAPING PACKAGE***UNDERGROUND UTILITIES & NATURAL GAS***12.6 ACRES FARMLAND ASSESSED FOR TAX SAVINGS*** Whispers of Holly Creek~Shrouded in tranquility, this 12.6 acre piece of paradise in the ever-charming town of Port Republic is perfectly nestled at the end of a cul-de-sac. This to-be-built custom beauty will be impeccable in every way from materials to high-end craftsmanship. Convenience of ranch-style living nestled in the woods. This spectacular opportunity to have a custom home on acreage is a rare find, turn this gem into your crown jewel!

PROPERTY DETAILS

Exterior	OutsideFeatures	ParkingGarage	InteriorFeatures
Stucco	Porch	Three or More Cars	Cathedral Ceiling
Fiber Cement Board Siding		Attached Garage	
AppliancesIncluded	Basement	Heating	Cooling
Dishwasher	Crawl Space	Forced Air	Central
Gas Stove		Gas-Natural	
		Multi-Zoned	



Ask for Theresa Maina
Berger Realty Inc.
3160 Asbury Avenue, Ocean City
Call: 609-399-0076
Email to: tam@bergerrealty.com

