

# Berger Realty

Since 1928



Berger Realty, Inc.  
3160 Asbury Avenue  
Ocean City, NJ 08226  
1-877-237-4371 / 609-399-0076  
info@bergerrealty.com



**16 Hannah**  
**Little Egg Harbor, NJ 08087**

**Asking \$527,700.00**

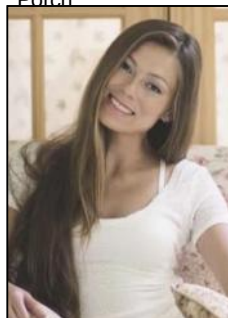


## COMMENTS

Nestled in the well-established Winding Run community, 16 Hannah Place offers a harmonious blend of modern comfort and classic charm. This Colonial-style residence spans 1,976 square feet and features three bedrooms and two and a half bathrooms. The heart of the home is its recently updated kitchen, boasting quartz countertops, a center island, pantry, and new stainless steel appliances. Adjacent to the kitchen, the spacious living and dining areas provide an inviting space for gatherings. The upper level houses three well-appointed bedrooms, including a primary suite with a walk-in closet and private bath. An adaptable loft area offers potential for a fourth bedroom or home office. The finished basement extends the living space, accommodating a family room, gym, and additional storage. Outdoor living is enhanced by a vinyl-fenced backyard and a deck complete with a pergola, perfect for relaxation or entertaining. The property's proximity to local parks and recreational facilities offers ample opportunities for outdoor activities. Residents of Little Egg Harbor Township enjoy access to various amenities, including nearby parks and the scenic Jersey Shore, providing options for leisure and recreation. With its thoughtful updates and prime location, 16 Hannah Place presents a wonderful opportunity to experience comfortable and convenient living in Little Egg Harbor.

## PROPERTY DETAILS

OutsideFeatures	ParkingGarage	OtherRooms	InteriorFeatures
Deck	Attached Garage	Eat In Kitchen	Kitchen Center Island
Porch	One Car		



Ask for Margarita Kobiljanets  
Berger Realty Inc.  
3160 Asbury Avenue, Ocean City  
Call: 609-399-0076  
Email to: mak@bergerrealty.com

Cooling  
Ceiling Fan(s)



Water  
Public

Sewer  
Public Sewer