

# Berger Realty

Since 1928

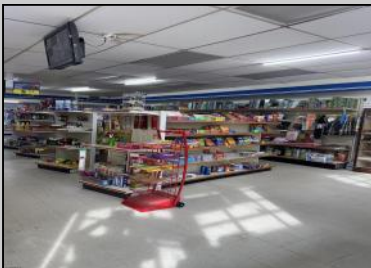


Berger Realty, Inc.  
3160 Asbury Avenue  
Ocean City, NJ 08226  
1-877-237-4371 / 609-399-0076  
info@bergerrealty.com



**2588 TILTON ROAD**  
**Egg Harbor Township, NJ 08234**

**Asking \$595,000.00**



## COMMENTS

Great location at the corner of Tilton Rd and Van Mar Ave. The property includes one commercial building with two commercial spaces, making it perfect for investment and starting a new business. Currently, it houses one convenience store (2000 Sf) and one vacant space (1500 Sf) that could serve as an office, restaurant, store, hair or nail salon. The location is adjacent to the busy Tilton and Garden Apartments, enhancing its appeal. All in one package: Building and convenience store, except inventory. sales as is condition. EZ to show. The show time must be after 11 am.

## PROPERTY DETAILS

Exterior	ParkingGarage	InteriorFeatures	Heating
Block	6 to 10 Spaces	Display Windows	Forced Air
Masonry		Restroom	Gas-Natural
		Storage	
Cooling	HotWater	Water	Sewer
Central	Gas	Public	Public Sewer



Ask for Veronica "Ronni" Vetro  
Berger Realty Inc  
3160 Asbury Avenue, Ocean City  
Call: 609-399-0076  
Email to: vrv@bergerrealty.com

