

Berger Realty

Since 1928

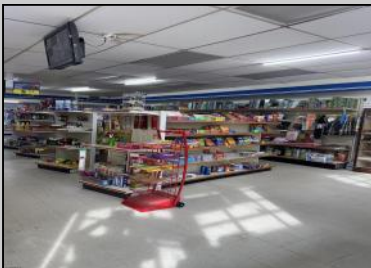


Berger Realty, Inc
1330 Bay Avenue
Ocean City, NJ 08226
609-391-1330/609-391-1300
info@bergerrealty.com



2588 TILTON ROAD
Egg Harbor Township, NJ 08234

Asking \$595,000.00



COMMENTS

Great location at the corner of Tilton Rd and Van Mar Ave. The property includes one commercial building with two commercial spaces, making it perfect for investment and starting a new business. Currently, it houses one convenience store (2000 Sf) and one vacant space (1500 Sf) that could serve as an office, restaurant, store, hair or nail salon. The location is adjacent to the busy Tilton and Garden Apartments, enhancing its appeal. All in one package: Building and convenience store, except inventory. sales as is condition. EZ to show. The show time must be after 11 am.

PROPERTY DETAILS

Exterior Block Masonry	ParkingGarage 6 to 10 Spaces	InteriorFeatures Display Windows Restroom Storage	Heating Forced Air Gas-Natural
Cooling Central	HotWater Gas	Water Public	Sewer Public Sewer



Ask for Barbara Fasy
Berger Realty Inc
1330 Bay Avenue, Ocean City
Call: 609-391-1330
Email to: bf@bergerrealty.com

