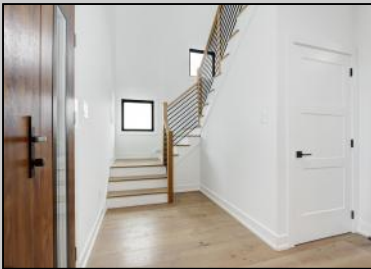


**116 Bayshore
Brigantine, NJ 08203**

Asking \$1,495,000.00



COMMENTS

THIS IS LIVING! This stunning 4BD/4.5 BA home will "Wow" you at every turn! Sophisticated Coastal Chic describes the vibe with its soaring volume ceilings, gorgeous hardwood flooring and contemporary architectural finishes. Relax and sip your cappuccino or wine on your covered deck and enjoy panoramic sweeping fairway and SUNSET views of New Jersey's Best Scottish Links golf course, the Brigantine Golf Links. The ground level features garage parking, ample and expansive storage for all your beach gear and toys. Level one houses the serene primary bedroom with SPA bath, walk-in closet, two additional en-suite bedrooms plus a spacious den, library or office complete the space. The 3rd and main fireplaced living/dining area has an open, airy floor plan with amazing views, an additional en-suite bedroom and a CUSTOM chef's dream kitchen with center island seating perfect for entertaining with room for the entire family and more! Experience carefree living on the beautiful island of Brigantine.. Call today!

PROPERTY DETAILS

Exterior Vinyl	OutsideFeatures Curbs Deck Fenced Yard Sidewalks Sprinkler System	ParkingGarage Attached Garage Auto Door Opener One Car	OtherRooms Den/TV Room Dining Area Great Room Laundry/Utility Room
InteriorFeatures Carbon Monoxide Detector Cathedral Ceiling Kitchen Center Island Smoke/Fire Alarm Storage Walk In Closet	AppliancesIncluded Dishwasher Disposal Dryer Gas Stove Microwave Refrigerator Washer	AlsoIncluded Shades	Basement 6 Ft. or More Head Room Outside Entrance Slab
Heating Forced Air Gas-Natural Multi-Zoned	Cooling Ceiling Fan(s) Central Multi-Zoned	HotWater Tankless-gas	Water Public
Sewer Public Sewer			

Berger Realty

• Since 1928 •



Berger Realty, Inc.
3160 Asbury Avenue
Ocean City, NJ 08226
1-877-237-4371 / 609-399-0076
✉ info@bergerrealty.com



Ask for J.K. Hepner, III
Berger Realty Inc
3160 Asbury Avenue, Ocean City
Call: 609-399-0076
Email to: jkh@bergerrealty.com

