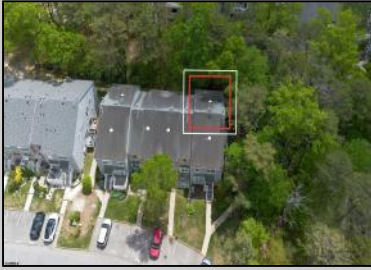




4768 Summersweet Dr
 Mays Landing, NJ 08330

Asking \$239,000.00



COMMENTS

Welcome to this private and peaceful Harding Run condo, located in a pet-friendly community. This end unit offers a rear entrance (see photo for reference) and is surrounded by woods, providing additional privacy. The association handles landscaping, snow and trash removal, and offers access to the pool, clubhouse, tennis courts, and playground. The unit features a spacious living room with a 1/2 bath on the main floor, and a deck off the dining area, perfect for outdoor relaxation. The two bedrooms share a Jack and Jill bathroom. The spacious basement is perfect for storage or can be transformed into additional living space. This condo is approved for FHA, 100% Rural Housing Financing, and VA home loans, making it an excellent choice for military buyers. Quick closing is available. Conveniently located near shopping, major highways, and more. Condo documents and the master deed are available upon request.

PROPERTY DETAILS

Exterior Vinyl	ParkingGarage None	Heating Gas-Natural	Cooling Central Multi-Zoned
HotWater Gas	Water Public Water	Sewer Public Sewer	



Ask for Evelyn "Evie" Schweibinz
 Berger Realty Inc
 3160 Asbury Avenue, Ocean City
 Call: 609-399-0076
 Email to: ems@bergerrealty.com

