



Berger Realty, Inc.
3160 Asbury Avenue
Ocean City, NJ 08226
1-877-237-4371 / 609-399-0076
✉ info@bergerrealty.com



2110 Riverside Dr
Atlantic City, NJ 08401

Asking \$140,000.00

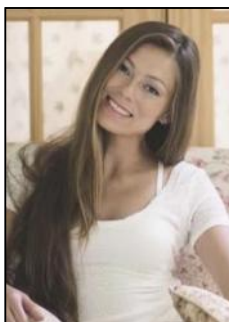
PHOTO NOT AVAILABLE



COMMENTS

Unparalleled Bayfront Lot in Atlantic City Discover the perfect canvas for your dream home with this remarkable 6,281 sq ft buildable bayfront lot in Atlantic City! Nestled in a prime location, this expansive parcel offers breathtaking views of the bay, ensuring stunning sunrises and sunsets that will be yours to enjoy every day. Imagine crafting a custom coastal retreat where you can relax and unwind while taking in the serene waterfront ambiance. This lot provides ample space for your vision—whether it's a luxurious family residence or an investment opportunity to capitalize on the booming Atlantic City market. Conveniently located near all the excitement that Atlantic City has to offer, you'll find world-class dining, entertainment, and beautiful beaches just moments away. Enjoy the best of both worlds with tranquil bayfront living and easy access to the vibrant city life. Don't miss your chance to secure this exceptional property and bring your dream to life in one of New Jersey's most desirable locations. Your waterfront oasis awaits!

PROPERTY DETAILS



Ask for Margarita Kobilianets
Berger Realty Inc
3160 Asbury Avenue, Ocean City
Call: 609-399-0076
Email to: mak@bergerrealty.com

