

# Berger Realty

Since 1928

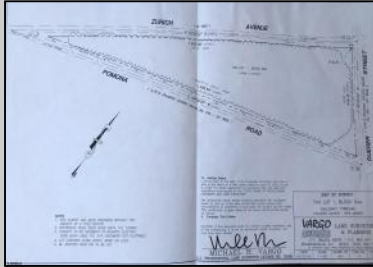


Berger Realty, Inc  
1330 Bay Avenue  
Ocean City, NJ 08226  
609-391-1330/609-391-1300  
info@bergerrealty.com



0 Pomona  
Galloway Township, NJ 08205

Asking \$89,000.00



#### COMMENTS

7.5 Acres of Buildable land for sale in Pomona / Galloway with Pinelands Approval. Large triangular lot with road frontage on all three sides. Over 3300' of road frontage! Located Across the street from Stockton Grounds & public Athletic Fields. Down the block from CVS and Super Wawa, Jimmie Leeds Road, Grden State Parkway on/off ramps, and Route 30 White Horse Pike. Minutes from the Atlantic City International Airport and the FAA Technical Center. Just 15 Minutes from Atlantic City and the Jersey Shore Beaches and World Famous Boardwalk! This location is unbelievable, a must see for anyone looking for the perfect spot to live!!!

#### PROPERTY DETAILS



Ask for Joan S. Spencer  
Berger Realty Inc  
1330 Bay Avenue, Ocean City  
Call: 609-391-1330  
Email to: jss@bergerrealty.com

