

Berger Realty

Since 1928

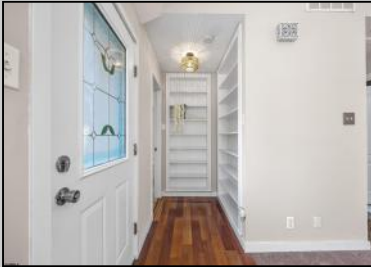
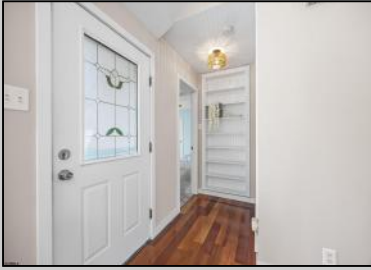


Berger Realty, Inc
1330 Bay Avenue
Ocean City, NJ 08226
609-391-1330/609-391-1300
info@bergerrealty.com



6214 Phillips Ave
Mays Landing, NJ 08330

Asking \$300,000.00



COMMENTS

Welcome to 6214 Phillips Avenue! A charming 3 bedroom and 2 full baths nestled in the heart of Mays Landing. This 1350 sq ft rancher sits on a spacious 7000 sq lot offering ample space for comfortable living. This property boasts a generous layout, ideal for those seeking a cozy residence or a promising investment. Property features a fenced in yard, beautiful deck, and air conditioning to get you ready for the beautiful warm New Jersey summer nights! Residents boost about the local amenities, sense of a small town feel, and the community's historic pride. Minutes away from local shopping, beaches, and farms...The opportunity to own this home won't last long. Whether you are a first time buyer or looking to invest, don't miss out on 6214 Phillips and all of the potential and value it will bring! DUE TO HIGH DEMAND HIGHEST AND BEST DUE THURSDAY AT 5PM.

PROPERTY DETAILS

ParkingGarage	Heating	Cooling	HotWater
None	Gas-Natural	Central Gas	Gas
Water	Sewer		
Public	Public Sewer		



Ask for Sheilah Baran
Berger Realty Inc
1330 Bay Avenue, Ocean City
Call: 609-391-1330
Email to: sdb@bergerrealty.com

