

Berger Realty

Since 1928

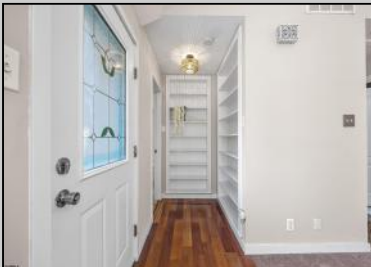


Berger Realty, Inc.
3160 Asbury Avenue
Ocean City, NJ 08226
1-877-237-4371 / 609-399-0076
info@bergerrealty.com



6214 Phillips Ave
Mays Landing, NJ 08330

Asking \$300,000.00



COMMENTS

Welcome to 6214 Phillips Avenue! A charming 3 bedroom and 2 full baths nestled in the heart of Mays Landing. This 1350 sq ft rancher sits on a spacious 7000 sq lot offering ample space for comfortable living. This property boasts a generous layout, ideal for those seeking a cozy residence or a promising investment. Property features a fenced in yard, beautiful deck, and air conditioning to get you ready for the beautiful warm New Jersey summer nights! Residents boost about the local amenities, sense of a small town feel, and the community's historic pride. Minutes away from local shopping, beaches, and farms...The opportunity to own this home won't last long. Whether you are a first time buyer or looking to invest, don't miss out on 6214 Phillips and all of the potential and value it will bring!

PROPERTY DETAILS

| | | | |
|---------------|--------------|---------|----------|
| ParkingGarage | Heating | Cooling | HotWater |
| None | Gas-Natural | Central | Gas |
| | | Gas | |
| Water | Sewer | | |
| Public | Public Sewer | | |



Ask for Evelyn "Evie" Schweibinz
Berger Realty Inc
3160 Asbury Avenue, Ocean City
Call: 609-399-0076
Email to: ems@bergerrealty.com

