

# Berger Realty

Since 1928



Berger Realty, Inc.  
3160 Asbury Avenue  
Ocean City, NJ 08226  
1-877-237-4371 / 609-399-0076  
info@bergerrealty.com



223 Churchill  
Egg Harbor Township, NJ 08234

Asking \$473,900.00



## COMMENTS

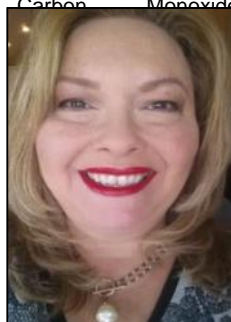
ARE YOU LOOKING FOR BRIGHT AND CHEERY? WELL, LOOK NO FURTHER !! Live in the center of it all in Egg Harbor Township, a location celebrated for its fantastic school system, with this immaculate and wonderfully bright 3-bedroom, 2.5-bath home. Enjoy the convenience of being just ten minutes from the Jersey Shore's boardwalk and beaches for all the summer fun. This pristine property features 9 foot ceilings & a beautiful cathedral foyer, ample parking (for all your guest) , a two-car garage, and a serene backyard backing to woods, offering a peaceful retreat. Inside, the light-filled rooms showcase the exceptional care this home has received, making it a TRULY MOVE-IN READY GEM in a prime Egg Harbor Township location.

## PROPERTY DETAILS

Exterior	OutsideFeatures	ParkingGarage	OtherRooms
Vinyl	Curbs	Attached Garage	Dining Area
	Fenced Yard	Auto Door Opener	Eat In Kitchen
	Patio	Two Car	Laundry/Utility Room
	Paved Road		Pantry
	Sidewalks		Storage Attic
	Sprinkler System		

InteriorFeatures	AppliancesIncluded	Basement	Heating
Carbon Monoxide	Dishwasher	6 Ft. or More Head Room	Forced Air
	Disposal		Gas-Natural

Ask for Theresa Maina  
Berger Realty Inc.  
3160 Asbury Avenue, Ocean City  
Call: 609-399-0076



Email to: tam@bergerrealty.com  
HotWater  
Gas  
Water  
Public

