

# Berger Realty

Since 1928



Berger Realty, Inc.  
3160 Asbury Avenue  
Ocean City, NJ 08226  
1-877-237-4371 / 609-399-0076  
info@bergerrealty.com



1101 Tilton  
Northfield, NJ 08225

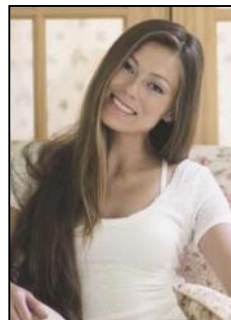
Asking \$2,075,000.00



#### COMMENTS

Prime commercial location on Tilton Road with high visibility. The previous use was a bank. There is a NNN Lease in place by previous tenant. This property is zoned C-B and all uses will have to be verified by the buyer with the township Property has 17 parking spaces. <https://buildout.com/website/1101TiltonRd>

#### PROPERTY DETAILS



Ask for Margarita Kobilianets  
Berger Realty Inc  
3160 Asbury Avenue, Ocean City  
Call: 609-399-0076  
Email to: mak@bergerrealty.com

