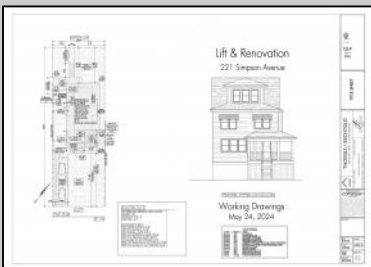


Berger Realty

Since 1928



Berger Realty, Inc.
3160 Asbury Avenue
Ocean City, NJ 08226
1-877-237-4371 / 609-399-0076
info@bergerrealty.com



221 Simpson
Ocean City, NJ 08226

Asking \$899,000.00



COMMENTS

Endless Potential in Ocean City's Sought-After North end. Welcome to 221 Simpson Avenue—a rare opportunity to renovate or build your dream home in a desirable Ocean City neighborhood. Situated on a 40' x 115' lot, this property offers flexibility for a full-scale rehab or new construction. The sale includes approved architectural plans for lift & renovation and zoning permit, ready for you to start project. The sale also includes new windows and doors, providing a head start for those considering renovation. Whether you're a developer, builder, investor, or end-user, this Northend gem is bursting with potential. Being sold strictly as-is. Don't miss your chance to create the ultimate beach retreat in America's Greatest Family Resort.

PROPERTY DETAILS

OutsideFeatures	ParkingGarage	Basement	Heating
Sidewalks	None	Crawl Space	See Remarks
Water	Sewer		
Public	Public Sewer		



Ask for Sara Varani
Berger Realty Inc
3160 Asbury Avenue, Ocean City
Call: 609-399-0076
Email to: sev@bergerrealty.com

