

Berger Realty

Since 1928



Berger Realty, Inc
1330 Bay Avenue
Ocean City, NJ 08226
609-391-1330/609-391-1300
info@bergerrealty.com



221 Simpson
Ocean City, NJ 08226

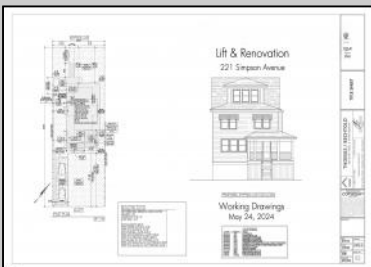
Asking \$899,000.00



COMMENTS

Located in the desirable Northend of Ocean City, 221 Simpson Avenue presents a rare opportunity for buyers, builders, developers and investors. This property offers two options: renovate the existing home—sale includes approved plans to lift/renovate with new windows and doors—or start fresh with your dream build. Whether you're looking to restore and personalize or build new from the ground up, this 40' x 115' lot is a canvas for your vision. Nestled in a quiet, sought-after neighborhood with close proximity to the bay, beaches, and Ocean City's vibrant downtown, the location can't be beat.

PROPERTY DETAILS



Ask for Ludwik Samselski
Berger Realty Inc
1330 Bay Avenue, Ocean City
Call: 609-391-1330
Email to: ls@bergerrealty.com

