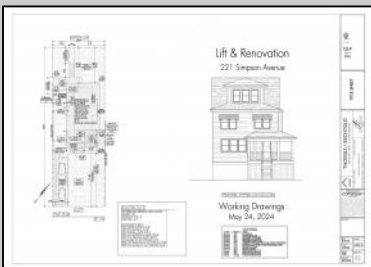


# Berger Realty

Since 1928



Berger Realty, Inc  
1330 Bay Avenue  
Ocean City, NJ 08226  
609-391-1330/609-391-1300  
info@bergerrealty.com



221 Simpson  
Ocean City, NJ 08226

Asking \$899,000.00



#### COMMENTS

Located in the desirable Northend of Ocean City, 221 Simpson Avenue presents a rare opportunity for buyers, builders, developers and investors. This property offers two options: renovate the existing home—sale includes approved plans to lift/renovate with new windows and doors—or start fresh with your dream build. Whether you're looking to restore and personalize or build new from the ground up, this 40' x 115' lot is a canvas for your vision. Nestled in a quiet, sought-after neighborhood with close proximity to the bay, beaches, and Ocean City's vibrant downtown, the location can't be beat.

#### PROPERTY DETAILS



Ask for John Tonkinson  
Berger Realty Inc  
1330 Bay Avenue, Ocean City  
Call: 609-391-1330  
Email to: jtn@bergerrealty.com

