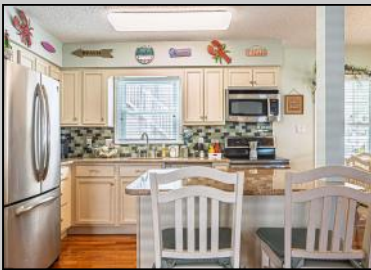


Berger Realty

Since 1928



Berger Realty, Inc.
3160 Asbury Avenue
Ocean City, NJ 08226
1-877-237-4371 / 609-399-0076
info@bergerrealty.com



3025 Haven
Ocean City, NJ 08226

Asking \$985,000.00



COMMENTS

Welcome to 3025 Haven Avenue, a beautifully maintained 3-bedroom, 2-bathroom home offering 1,100 square feet of comfortable, move-in ready living space. Step inside to an open-concept kitchen and living room featuring gorgeous granite countertops, a large granite island, abundant cabinet space, stainless steel appliances, and a good-sized pantry. The hardwood floors throughout are installed over moisture-resistant padding, adding both style and durability. Two sliding doors, just five years old and featuring built-in blinds, lead out to the oversized deck complete with retractable awnings — perfect for relaxing or entertaining. The windows, replaced in 2015, are outfitted with attractive faux wood blinds, adding style and privacy throughout. The three bedrooms are tucked away at the back of the home, each with great closet space and ceiling fans, including a primary suite with its own private full bath. Both bathrooms have been tastefully updated with marble showers and floors. Additional highlights include a brand-new, top-of-the-line gas forced air HVAC system with backup electric heat, a cozy three-year-old gas fireplace, added storage for bikes, a shed, and the convenience of an oversized, fully enclosed outdoor shower — offering the home's third full shower for even more comfort and flexibility. This is shore living at its best — just bring your bags and enjoy! Listing is Contingent on seller finding suitable housing. No Showings until Friday May 2nd

PROPERTY DETAILS

Exterior
Vinyl

ParkingGarage
None

OtherRooms
Dining Area
Pantry

InteriorFeatures
Fireplace(s)
Hardwood Floors
Kitchen Center Island
Master Bath



Ask for Chris Warren
Berger Realty Inc
3160 Asbury Avenue, Ocean City
Cooling
Call: 609-399-0076
Central Water
Public Water
Email to: caw@bergerrealty.com

