

Berger Realty

• Since 1928 •

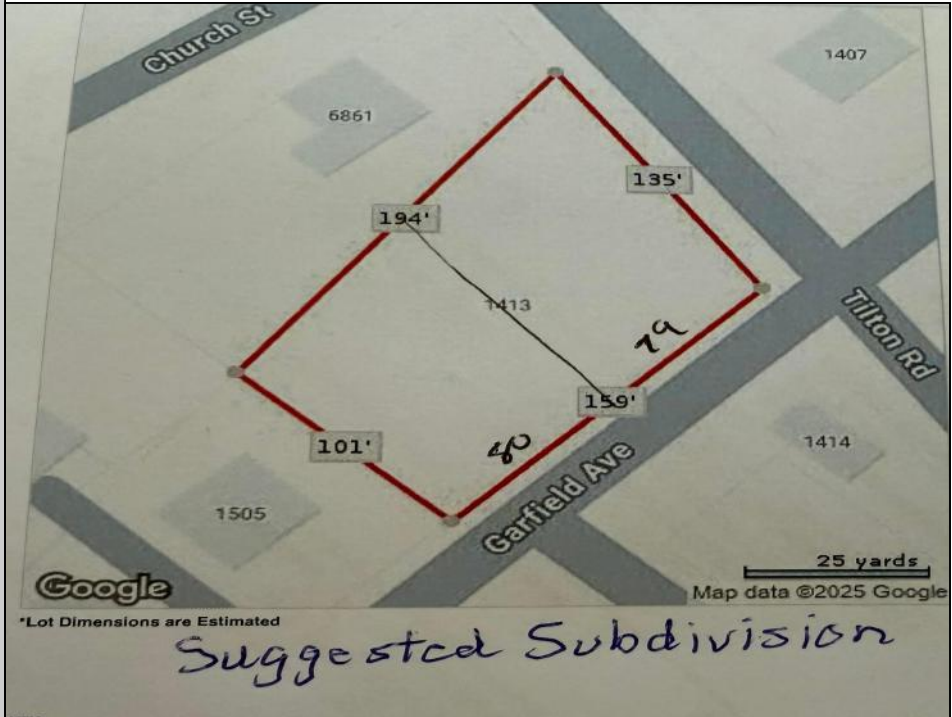


Berger Realty, Inc.
3160 Asbury Avenue
Ocean City, NJ 08226
1-877-237-4371 / 609-399-0076
✉ info@bergerrealty.com



**1413-1419 Garfield
Pleasantville, NJ 08232**

Asking \$69,900.00



COMMENTS

Large buildable lot on the corner of Garfield Ave and Tilton Roads on the Pleasantville/EHT/Northfield borders. Seller believes it may be subdividable but buyer responsible to do their own due diligence before purchasing.

PROPERTY DETAILS



Ask for Joe Young
Berger Realty Inc
3160 Asbury Avenue, Ocean City
Call: 609-399-0076
Email to: jty@bergerrealty.com

