

Berger Realty

Since 1928

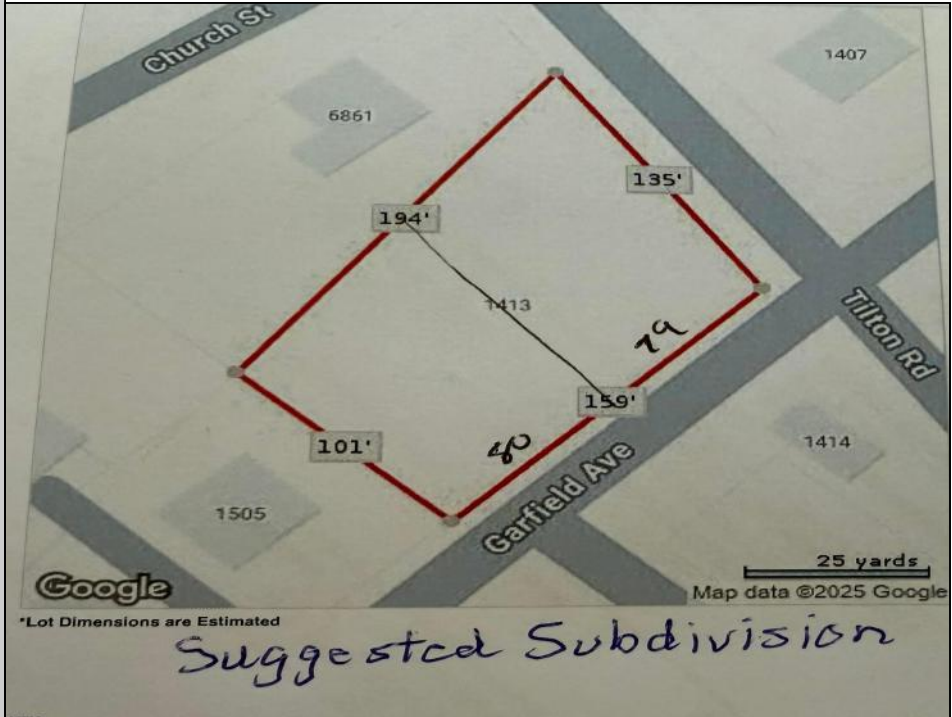


Berger Realty, Inc
1330 Bay Avenue
Ocean City, NJ 08226
609-391-1330/609-391-1300
info@bergerrealty.com



1413-1419 Garfield
Pleasantville, NJ 08232

Asking \$69,900.00



COMMENTS

Large buildable lot on the corner of Garfield Ave and Tilton Roads on the Pleasantville/EHT/Northfield borders. Seller believes it may be subdividable but buyer responsible to do their own due diligence before purchasing.

PROPERTY DETAILS



Ask for John Tonkinson
Berger Realty Inc
1330 Bay Avenue, Ocean City
Call: 609-391-1330
Email to: jtn@bergerrealty.com

