

Berger Realty

Since 1928

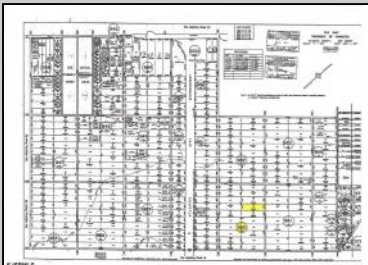
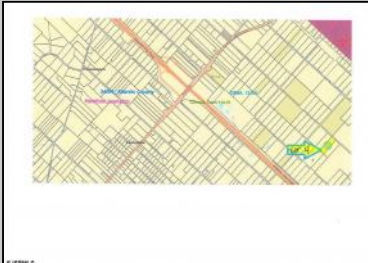
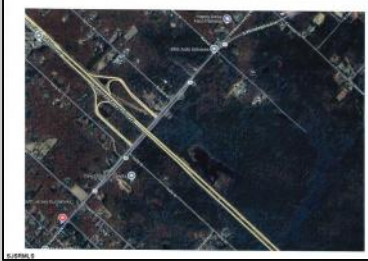


Berger Realty, Inc
1330 Bay Avenue
Ocean City, NJ 08226
609-391-1330/609-391-1300
info@bergerrealty.com



Walnut
Mays Landing, NJ 08330

Asking \$12,000.00



* Street ends at yellow line

SJSRMLS

COMMENTS

4.86 Acres Vacant Land. Perfect for density transfer, Pinelands credit, or future investment. Suitable for recreation, hunting, nature photography, etc. Property on paper street (Walnut Ave), Buyer responsible to improve the road to Township standards. Buyer is responsible for any and all due diligence on property. Seller has owned this property for many years, bring all offers!

PROPERTY DETAILS



Ask for Barbara Fasy
Berger Realty Inc
1330 Bay Avenue, Ocean City
Call: 609-391-1330
Email to: bf@bergerrealty.com

