

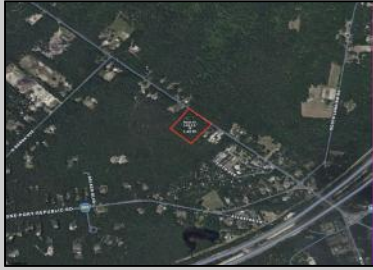
Berger Realty

Since 1928



Berger Realty, Inc.
55th & Haven Avenue
Ocean City, NJ 08226
609-399-0040

info@bergerrealty.com



00 Clarks Landing
Port Republic, NJ 08241

Asking \$99,000.00



COMMENTS

Port Republic - Great location and a rare find! 2 contiguous lots on Clarks Landing Road. Lots equal 1.43 acres. Lot #4 - 160 ft. frontage. Lot #12 - 80 ft. frontage. Depth is 260ft. Wooded, All approvals including Pinelands, Zoning solely the responsibility of the buyer. Great opportunity for builder/investor or homeowner.

PROPERTY DETAILS



Ask for Carole Lelli
Berger Realty Inc
109 E 55th St., Ocean City
Call: 609-399-4211
Email to: cll@bergerrealty.com

