

Berger Realty

Since 1920



Berger Realty, Inc.
3160 Asbury Avenue
Ocean City, NJ 08226
1-877-237-4371 / 609-399-0076
info@bergerrealty.com



**222 New
Pleasantville, NJ 08232**

Asking \$695,000.00

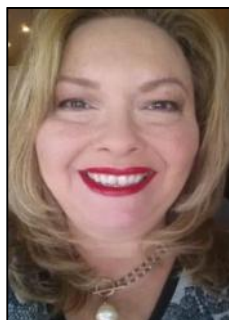


COMMENTS

Spacious partial Two-Story Warehouse in Pleasantville – Approx. 5,000 Sq Ft Built in 1998, this well-maintained warehouse offers approximately 5,000 square feet of versatile space in a prime Pleasantville location. The first floor includes an office area that can easily be converted into a showroom, while the second floor features additional space ideal for two more offices. Highlights include: High ceilings with a 12' overhead door Large loading dock for easy shipping and receiving 208/220V, 600-amp electrical service – suitable for a wide range of industrial needs Conveniently located near major highways, Atlantic City, and Philadelphia This is a must-see property for businesses looking for functionality, flexibility, and a great location.

PROPERTY DETAILS

Exterior Brick	ParkingGarage 6 to 10 Spaces	InteriorFeatures 220 Volt Electricity Restroom Storage	Basement Slab
Water Public	Sewer Public Sewer		



Ask for Theresa Maina
Berger Realty Inc
3160 Asbury Avenue, Ocean City
Call: 609-399-0076
Email to: tam@bergerrealty.com

