

Berger Realty

Since 1928



Berger Realty, Inc.
3160 Asbury Avenue
Ocean City, NJ 08226
1-877-237-4371 / 609-399-0076
info@bergerrealty.com



418 Shore Rd.
Beesleys Point, NJ 08223

Asking \$450,000.00

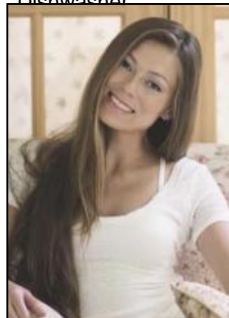


COMMENTS

Welcome to your dream shore getaway or year-round haven in the heart of Beesley's Point—a quiet, highly sought-after bayside community just five minutes from Ocean City's beaches and boardwalk. This beautifully maintained 2-bedroom, 2-bath home offers the perfect blend of charm, comfort, and coastal lifestyle. Enjoy a short walk to beautiful water views of Peck's Bay or grab a waterside cocktail at the world-famous Tuckahoe Inn. Sitting on just under a half-acre, outdoor living takes center stage. Sipping morning coffee on your upper-level deck. Easy living on your large main level screened-in and bug free porch. Mature trees and shrubbery providing just the right amount of privacy and shade for those hot summer days. This home and it's ideal location have a lot to offer. A rare opportunity to own a slice of the shore without the hustle and bustle. Don't miss your chance to make this your own! Call today to schedule your showing!

PROPERTY DETAILS

Exterior Asbestos	OutsideFeatures Deck Fenced Yard Porch Enclosed Shed	ParkingGarage Detached Garage Two Car	InteriorFeatures Carbon Monoxide Detector Smoke/Fire Alarm
AppliancesIncluded Dishwasher	Basement 6 Ft. or More Room Main Floor Outside Entrance Unfinished	Heating Head Radiator	Cooling Ceiling Fan(s) Central



Ask for Margarita Kobilianets
Berger Realty Inc
3160 Asbury Avenue, Ocean City
Call: 609-399-0076
Email to: mak@bergerrealty.com

Water
Public Well
Sewer
Septic

