

Berger Realty

Since 1920

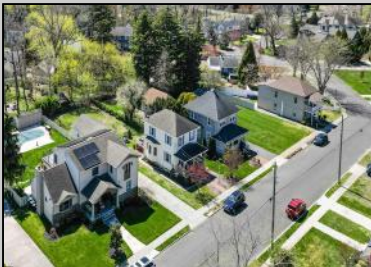


Berger Realty, Inc.
3160 Asbury Avenue
Ocean City, NJ 08226
1-877-237-4371 / 609-399-0076
info@bergerrealty.com



15 elm
Linwood, NJ 08221

Asking \$450,000.00



COMMENTS

No showings until 4/28/2025 100 years ago sea captains working the Scull and Absecon bays lived here. This is a unique piece of history with so much character and charm, 9 foot ceilings, full walls of windows with plenty of natural light, and a perfect covered front porch to enjoy the cool bay breeze on a sunny day or moody storms with a cup of tea. Just steps away from the bike path and Jessie's of Linwood, and less than half a mile from All Wars Memorial Park. Within a mile of the bay, local, National Blue Ribbon schools and Linwood Country Club, and less than 5 miles from beautiful beaches like Longport and Ocean City! 11 miles to exciting Atlantic City nightlife. The extensive, tree-lined backyard and a detached garage have great potential for your vision of additional living space. New windows throughout in 2022, original hardwood floors with walnut accent were refinished in 2023, bathroom completely renovated in 2023, and kitchen renovated in 2025 with new appliances. The full sized basement can serve as a fourth bedroom or additional living space and has a full second bathroom. Taxes low for the lot size and location in Linwood!

PROPERTY DETAILS

Exterior	ParkingGarage	Basement	Heating
Wood	Two Car	6 Ft. or More Room Full	Head Gas-Natural Radiant



HotWater
GasAsk for Tanya Pinkerton

Water

Sewer
Public Sewer

Berger Realty Inc
3160 Asbury Avenue, Ocean City
Call: 609-399-0076
Email to: tp@bergerrealty.com

