

Berger Realty

Since 1928

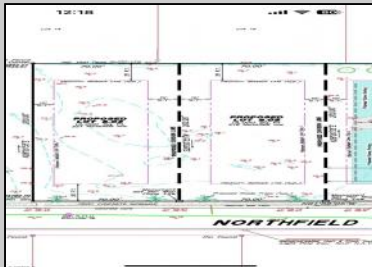


Berger Realty, Inc.
3160 Asbury Avenue
Ocean City, NJ 08226
1-877-237-4371 / 609-399-0076
info@bergerrealty.com



221 Northfield
Northfield, NJ 08225

Asking \$250,000.00



COMMENTS

The lot is available for custom home to be built by Vida Homes Builders. You can choose the house plan from the builder's collection, or you can bring your own. Location, location, location-the lot is located 70 feet from the Northfield bike path on quiet street and 7 min drive from the Margate beaches. Builder is ready to answer all your questions. Call to set up the meeting. Check next door 219 Northfield Ave project too.

PROPERTY DETAILS



Ask for Joyce McMahon
Berger Realty Inc
3160 Asbury Avenue, Ocean City
Call: 609-399-0076
Email to: jmm@bergerrealty.com

