

Berger Realty

Since 1928

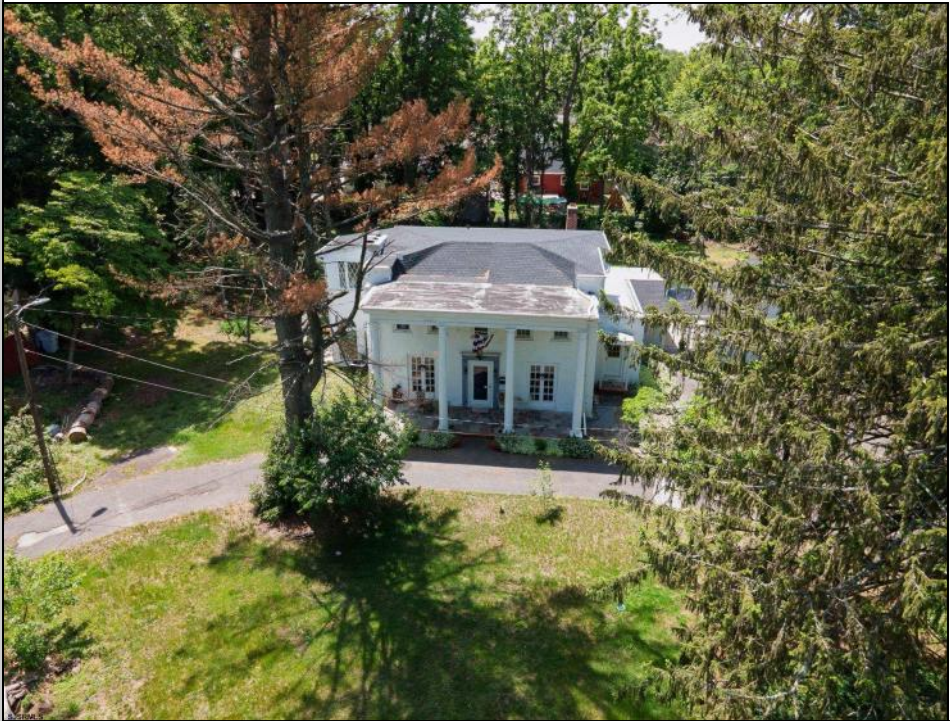


Berger Realty, Inc.
3160 Asbury Avenue
Ocean City, NJ 08226
1-877-237-4371 / 609-399-0076
info@bergerrealty.com



1071 Park
Vineland, NJ 08360

Asking \$479,000.00



COMMENTS

****OPEN HOUSE 6/28 1-3 PM**** Just under 1.5 acres and nestled in a serene neighborhood, this charming 1930's Colonial home exudes timeless elegance and classic architectural beauty. As you approach the property by way of the grand circle driveway, you are greeted by a picturesque facade featuring symmetrical windows, double French doors and a welcoming front porch, perfect for enjoying a morning coffee. Inside, the home boasts original hardwood floors adding a touch of historical charm. The spacious living room, complete with a wood-burning fireplace, offers a cozy retreat, while the formal dining room is ideal for hosting gatherings. The kitchen retains its vintage appeal with some modern updates like granite counter tops for convenience. Upstairs, well-appointed bedrooms provide ample space and comfort. The owner's suite is very grand with fireplace, huge sunroom and walk-in closet. The home is set on a generous 1+ acres with mature landscaping, offering privacy and a tranquil escape. The back paver and concrete patio is large enough for all of your gatherings. A two-car detached garage with breezeway connecting to the breakfast/mud room is timeless. This Colonial treasure is a rare find, blending the nostalgia of the past with the comforts of today.

PROPERTY DETAILS

Exterior	OutsideFeatures	ParkingGarage	OtherRooms
Asphalt	Patio	Detached Garage	Breakfast Nook
Concrete		Two Car	Dining Room
Stucco			Eat In Kitchen
			Laundry/Utility Room
			Library/Study
			Recreation/Family
InteriorFeatures	AppliancesIncluded	Basement	
Storage	Dishwasher	6 Ft. or More Headroom	
Walk In Closet	Electric Stove	Room	
	Refrigerator	Full	
		Inside Entrance	
		Masonry Floor/Wall	
		Slab	
		Unfinished	
Cooling	Water	Sewer	
Central	Public	Public Sewer	