

# Berger Realty

Since 1928



Berger Realty, Inc  
1330 Bay Avenue  
Ocean City, NJ 08226  
609-391-1330/609-391-1300  
[info@bergerrealty.com](mailto:info@bergerrealty.com)

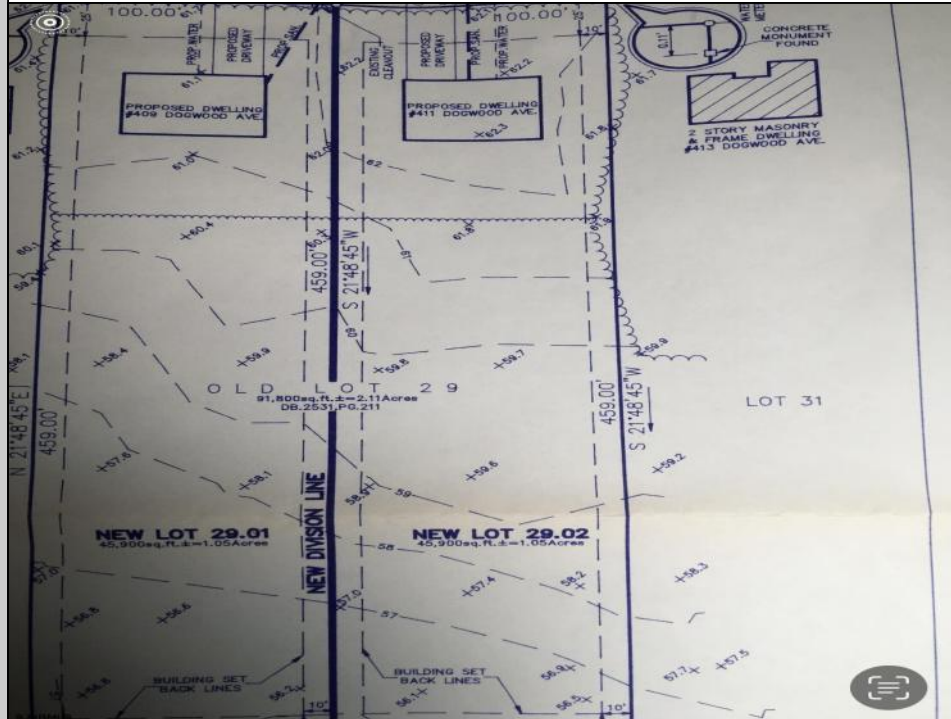


Property Map



**411 DOGWOOD**  
**Egg Harbor Township, NJ 08234**

**Asking \$150,000.00**



#### COMMENTS

Build your new home on a Dogwood ave in Egg Harbor Township. One vacant lot left; in a size of 1.04 acres; with dimensions 94 x 482. All utilities on the street, zoned residential, buildable lot for a single family home Top location for a family oriented neighborhood. Located with walking distance to the enormous and beautiful Tony Canale Park, walking distance to the 7 mile bike path, close to shopping and restaurants, quick exp. way acces; about 20 min to the beach and boardwalk. Surrounded by a beautiful homes.

#### PROPERTY DETAILS



Ask for Thomas Horan  
Berger Realty Inc  
1330 Bay Avenue, Ocean City  
Call: 609-391-1330  
Email to: [tph@bergerrealty.com](mailto:tph@bergerrealty.com)

