

Berger Realty

• Since 1928 •



Ocean 17
1670 Boardwalk
Ocean City, NJ 08226
609-391-0500



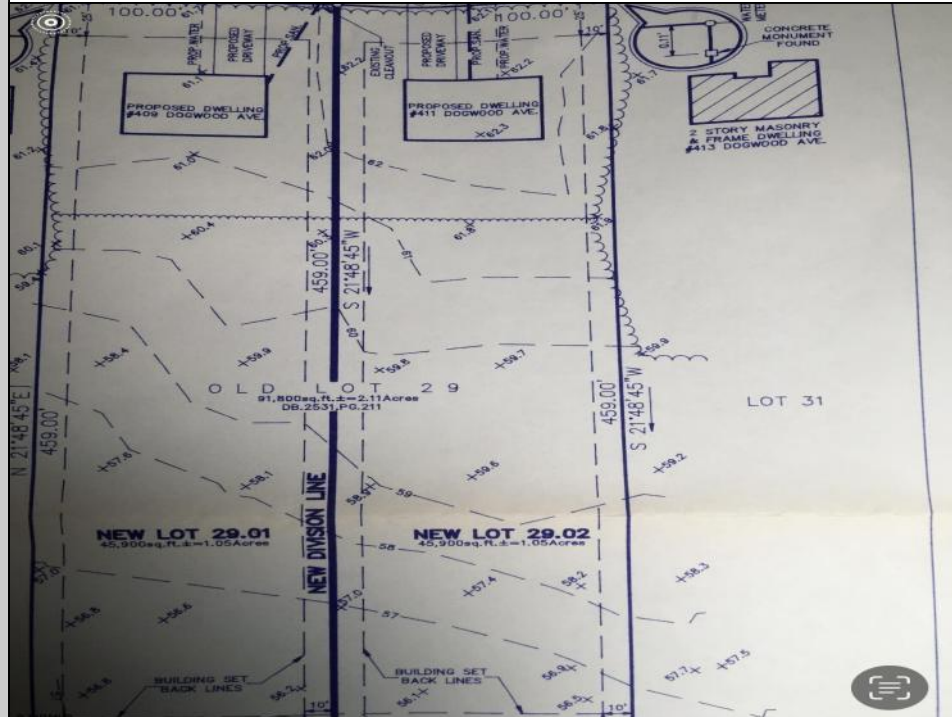
✉ oc17@BergerRealty.com

Property Map



411 DOGWOOD
Egg Harbor Township, NJ 08234

Asking \$150,000.00



COMMENTS

Build your new home on a Dogwood ave in Egg Harbor Township. One vacant lot left; in a size of 1,04 acres; with dimensions 94 x 482. All utilities on the street, zoned residential, buildable lot for a single family home Top location for a family oriented neighborhood. Located with walking distance to the enormous and beautiful Tony Canale Park, walking distance to the 7 mile bike path, close to shopping and restaurants, quick exp. way acces; about 20 min to the beach and boardwalk. Surrounded by a beautiful homes.

PROPERTY DETAILS



Ask for Laryn Crisci
Berger Realty Inc
1670 Boardwalk, Ocean City
Call: 609-391-0500
Email to: lrc@bergerrealty.com

