

# Berger Realty

Since 1928



Berger Realty, Inc.  
3160 Asbury Avenue  
Ocean City, NJ 08226  
1-877-237-4371 / 609-399-0076  
info@bergerrealty.com

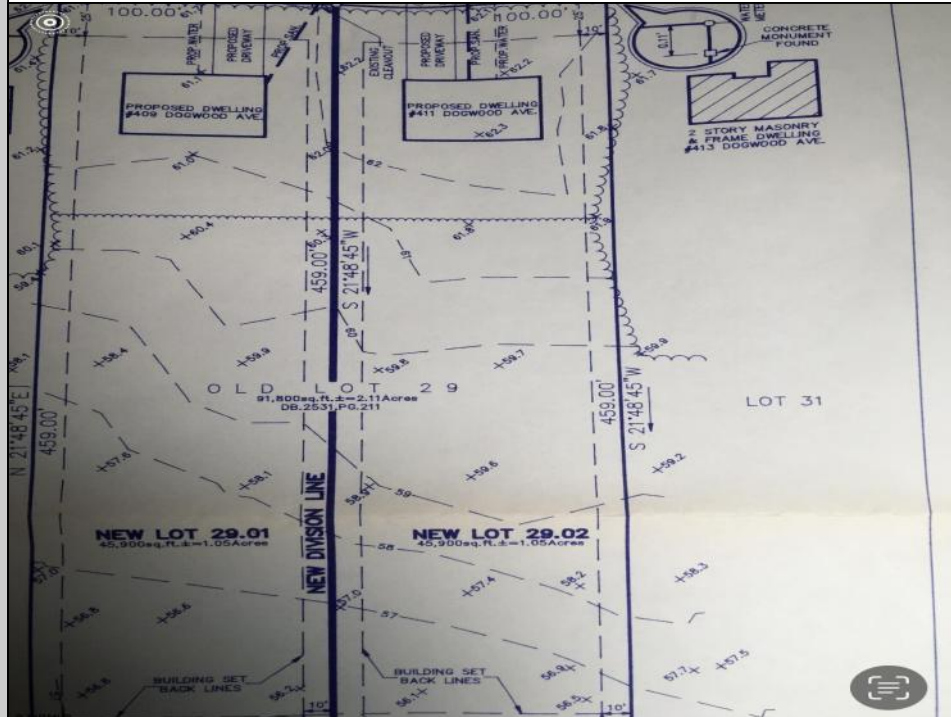


Property Map



**411 DOGWOOD**  
**Egg Harbor Township, NJ 08234**

**Asking \$150,000.00**



#### COMMENTS

Build your new home on a Dogwood ave in Egg Harbor Township. One vacant lot left; in a size of 1.04 acres; with dimensions 94 x 482. All utilities on the street, zoned residential, buildable lot for a single family home Top location for a family oriented neighborhood. Located with walking distance to the enormous and beautiful Tony Canale Park, walking distance to the 7 mile bike path, close to shopping and restaurants, quick exp. way acces; about 20 min to the beach and boardwalk. Surrounded by a beautiful homes.

#### PROPERTY DETAILS

**SALE**

*Bc*

**BADER-COLLINS ASSOCIATES**  
"THE TEAM YOU CAN TRUST"

**BERGER REALTY**  
3160 Asbury Avenue

**BADERCOLLINS.COM**

Ask for Bader - Collins Associates  
Berger Realty Inc  
3160 Asbury Avenue, Ocean City  
Call: 609-399-0076  
Email to: bca@bergerrealty.com  
http://www.BADERCOLLINS.com

