

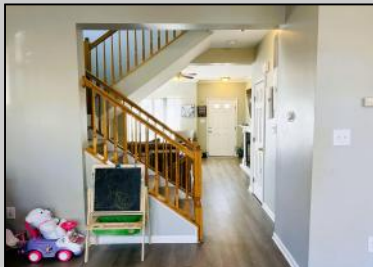
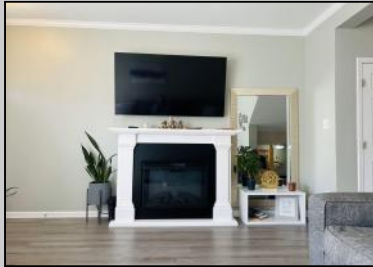
Berger Realty

Since 1928



Ocean 17
1670 Boardwalk
Ocean City, NJ 08226
609-391-0500

oc17@BergerRealty.com



**62 Westover Cirle
Mays Landing, NJ 08330**

Asking \$365,000.00



COMMENTS

Welcome to this beautifully maintained 3-bedroom, 2.5-bathroom condo in the sought-after Victoria Crossings community! This home is in pristine condition, with all major mechanicals recently updated, ensuring peace of mind for its next owner. Step inside to a spacious first-floor living area that seamlessly flows into the kitchen, with direct access to a private back deck—perfect for entertaining. Upstairs, you'll find three generously sized bedrooms with ample closet space, including a luxurious master suite with a walk-in closet and ensuite bathroom. The fully finished basement offers even more living space, complete with a versatile bonus room—ideal for a home office, gym, or playroom. Outside, enjoy a backyard retreat perfect for relaxing or hosting guests. Victoria Crossings offers fantastic amenities, including a pool, clubhouse, and playgrounds for the kids, all in a prime Mays Landing location. Don't miss the opportunity to call this move-in-ready gem your new home!

PROPERTY DETAILS

Exterior Vinyl	ParkingGarage One Car	Heating Forced Air Gas-Natural	Cooling Central
HotWater Gas	Water Public Water	Sewer Public Sewer	



Ask for Peter Harp
Berger Realty Inc
1670 Boardwalk, Ocean City
Call: 609-391-0500
Email to: pph@bergerrealty.com

