

# Berger Realty

Since 1928



Berger Realty, Inc.  
3160 Asbury Avenue  
Ocean City, NJ 08226  
1-877-237-4371 / 609-399-0076  
info@bergerrealty.com



6414 Strand Ave  
Mays Landing, NJ 08330

Asking \$395,000.00



## COMMENTS

CHOOSE YOUR COLORS with this New Construction on a Private 1-Acre Wooded Lot This brand-new 1,300 sq. ft. home is set 200 feet back from the road for added privacy. Located just 5 miles from the town centers of Mays Landing and Buena, this home offers both tranquility and convenience. Home Features: 3 Bedrooms, 2 Baths Open-concept living area with a split-bedroom design 6' x 20' covered front porch with a saddle roof style. Energy-efficient insulation: R-50 ceiling, R-21 exterior walls, R-19 floor High-efficiency HVAC: 14+ SEER air conditioning, 92%+ gas forced hot air, high-efficiency electric hot water Interior Finishes: Sheet vinyl flooring in the kitchen, baths, and utility rooms Vinyl laminate flooring in the living room, dining area, and hallway Carpet in bedrooms Fully equipped kitchen with dishwasher, range, microwave, and refrigerator Customization Options for Approved Buyers: Choice of roof and siding colors Flooring selections with upgrade options Kitchen cabinet colors with upgrade options Granite kitchen countertops Utilities: Natural gas, overhead electric, well, and septic. This property is grandfathered in a 10-acre zone and includes an additional non-contiguous 10-acre lot nearby, offering a variety of recreational possibilities. Contact us today for more details on this rare opportunity. Financing available! Targeted date for completion of construction is August/September time frame. Pictures are not of actual home but a previously built similar home to show finishes

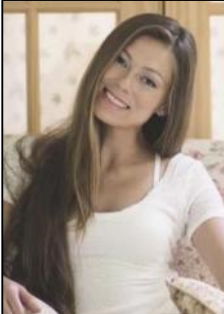
## PROPERTY DETAILS

ParkingGarage

Heating  
Gas-Natural

Water  
Well

Sewer  
Septic



Ask for Margarita Kobilianets

Berger Realty Inc

3160 Asbury Avenue, Ocean City

Call: 609-399-0076

Email to: mak@bergerrealty.com

