

# Berger Realty

Since 1928

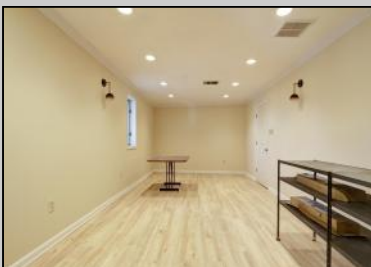


Berger Realty, Inc.  
3160 Asbury Avenue  
Ocean City, NJ 08226  
1-877-237-4371 / 609-399-0076  
info@bergerrealty.com



48 Ansley  
Pleasantville, NJ 08232

Asking \$329,900.00



## COMMENTS

**HURRY!** This 4,000 Sq. Ft. office building is a perfect location for a law firm, accountants, engineers, doctors, health care, chiropractor, etc. The 1st floor has 7 exam rooms, 2 bathrooms, lobby/ waiting area, 4-5 offices, a reception area, lots of storage, and 6-10 parking spaces in the back of the building. There is also plenty of parking in front of the building. The 2nd floor has 3 large offices, kitchen, conference room, bathroom and 2 storage areas. The building is massive and has multiple uses as mentioned above. It's conveniently located with quick access to Atlantic City and the mainland. If you or anyone you know is looking for great space and an affordable building, call NOW to schedule your private showing.

## PROPERTY DETAILS

Exterior Frame/Wood	OutsideFeatures Sign	ParkingGarage 6 to 10 Spaces Off Street Paved	InteriorFeatures Handicap Features Restroom Security System Smoke/Fire Alarm Storage
Basement Crawl Space	Heating Gas-Natural	Cooling Central Multi-Zoned	HotWater Gas



Ask for Norman Hartzel  
Senior  
Public  
Berger Realty Inc  
3160 Asbury Avenue, Ocean City  
Call: 609-399-0076  
Email to:

