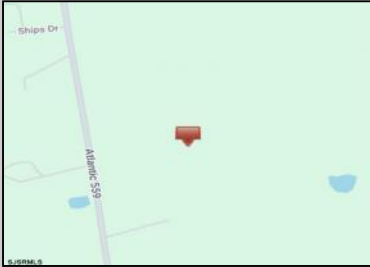


# Berger Realty

Since 1928

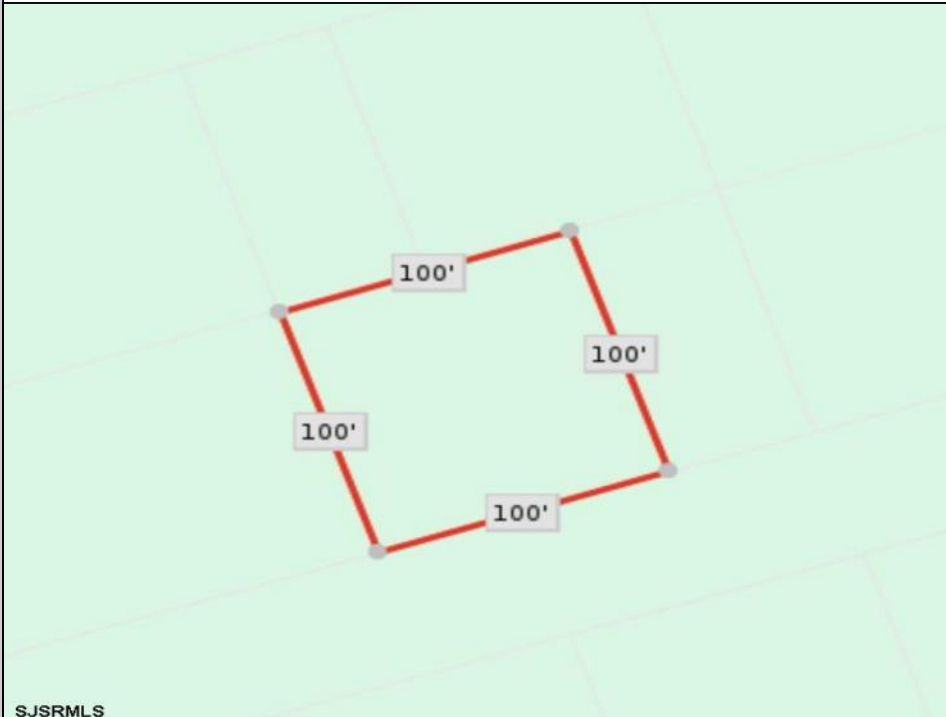


Berger Realty, Inc  
1330 Bay Avenue  
Ocean City, NJ 08226  
609-391-1330/609-391-1300  
✉ [info@bergerrealty.com](mailto:info@bergerrealty.com)



**Somers Point Rd. / Connell Ave**  
**Egg Harbor Township, NJ 08234**

**Asking \$15,000.00**



SJSRMLS

#### COMMENTS

10,000 Square Foot Lot Per Egg Harbor Township zoning. Appropriate for neighboring properties to add square footage to their adjoining property. The Buyer has to perform all due diligence.

#### PROPERTY DETAILS



Ask for Phillip Bellucci  
Berger Realty Inc  
1330 Bay Avenue, Ocean City  
Call: 609-391-1330  
Email to: [pjb@bergerrealty.com](mailto:pjb@bergerrealty.com)

