

Berger Realty

Since 1928

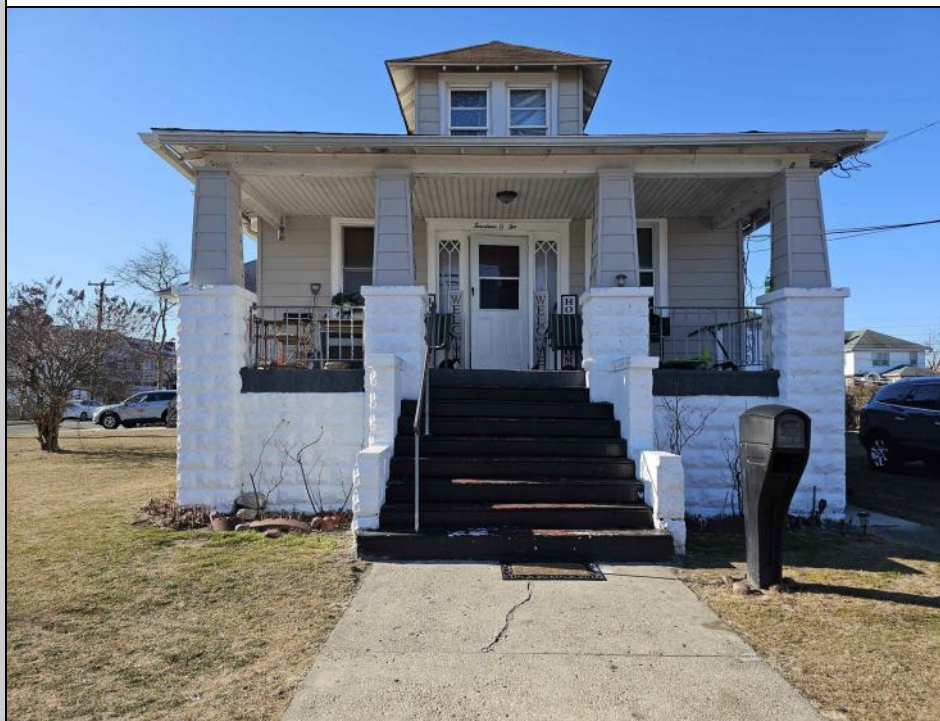


Berger Realty, Inc.
3160 Asbury Avenue
Ocean City, NJ 08226
1-877-237-4371 / 609-399-0076
info@bergerrealty.com



1402 Michigan
Atlantic City, NJ 08401

Asking \$275,000.00



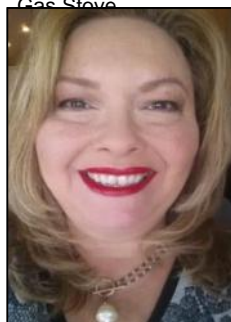
COMMENTS

****Beautiful Bayview Home in Venice Park – Great Investment Opportunity!**** Welcome to this charming corner-lot home in Venice Park! This spacious 5-bedroom, 2-bathroom house offers stunning bay views and 1,682 square feet of space, ideal for families or investors seeking rental income. Currently, the home is rented with a one-year lease, making it a hassle-free investment! Inside, you'll find a space ready for your personal touch. It's just minutes from Atlantic City's top attractions, with shopping, dining, public transportation, and schools like Venice Park School nearby. The large lot offers plenty of room for outdoor activities or future expansions. Whether you're looking for a family home or a solid investment, this property combines peaceful living with Atlantic City's excitement. Don't miss this opportunity! Sold as-is, this home allows you to create your vision while generating rental income. Schedule your showing today!

PROPERTY DETAILS

Exterior	OutsideFeatures	ParkingGarage	InteriorFeatures
Concrete	Curbs	None	Carbon Monoxide
Vinyl	Paved Road		Detector
	Porch		Smoke/Fire Alarm
	Sidewalks		

AppliancesIncluded	Basement	Heating	Cooling
Gas Stove	Partial	Gas-Natural	Window Units



Ask for Theresa Maina
Berger Realty Inc.
3160 Asbury Avenue, Ocean City
Call: 609-399-0076
Email to: tam@bergerrealty.com

