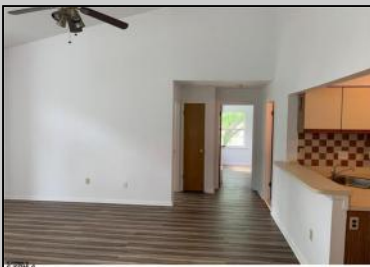


Berger Realty

Since 1928



Berger Realty, Inc.
3160 Asbury Avenue
Ocean City, NJ 08226
1-877-237-4371 / 609-399-0076
info@bergerrealty.com



35 Heather Croft
Egg Harbor Township, NJ 08234

Asking \$195,000.00



COMMENTS

Don't miss this rare opportunity to own a second-floor unit in the highly desirable Heather Croft Condominium! Nestled in one of the most peaceful and private areas of the complex, this unit offers a serene living experience. The spacious living room features soaring cathedral ceilings that invite an abundance of natural light, creating a warm and welcoming atmosphere. Recent updates include: Brand new kitchen cabinets, appliances, and flooring Renovated bathroom with a new floor and vanity. Fresh paint throughout New interior doors. Ample parking is available exclusively on this quieter side of Heather Croft, adding to the convenience. Whether you're looking for a comfortable home or a fantastic investment opportunity, this property is a must-see! New pictures are coming soon!

PROPERTY DETAILS

Exterior Vinyl	ParkingGarage None	OtherRooms Breakfast Nook	InteriorFeatures Cathedral Ceiling(s)
Heating Electric Forced Air Heat Pump	Cooling Electric	HotWater Electric	Water Public Water



Ask for Graham Ginn
Berger Realty Inc
3160 Asbury Avenue, Ocean City
Call: 609-399-0076
Email to: gmg@bergerrealty.com
https://www.ocnj.com

