

# Berger Realty

Since 1928

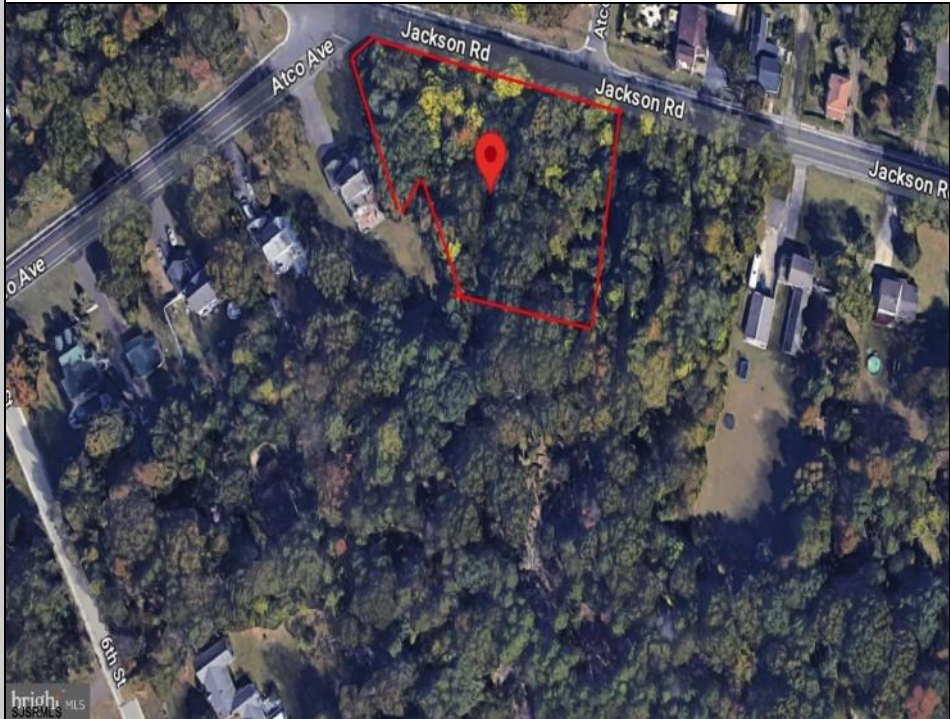


Berger Realty, Inc.  
3160 Asbury Avenue  
Ocean City, NJ 08226  
1-877-237-4371 / 609-399-0076  
info@bergerrealty.com



**535 Jackson**  
**Waterford Works, NJ 08004**

**Asking \$55,000.00**



#### COMMENTS

**CALLING ALL BUILDERS/INVESTORS!** This lot is being sold in conjunction with two other contiguous parcels zoned as Neighborhood Business District in the heart of Waterford Twp's own Atco Ave Business Community. See attached document for list of uses. Totalling about 2.5 acres of land, these lots are located on the corner of Atco Ave and Jackson Rd just a 3-minute drive away from Rt 73. These Mixed-Use lots sit among both residential homes and local businesses providing a steady flow of exposure to any new business! Lots are buildable and already subdivided - could most likely be developed individually with one 5-foot road frontage variance obtained. Could be combined and redivided to meet your builder's needs OR combined to produce one large, developed property - possibilities are endless! Buyer responsible for all Due Diligence and verifying all information on this listing

#### PROPERTY DETAILS



Ask for Michael Maina  
Berger Realty Inc  
3160 Asbury Avenue, Ocean City  
Call: 609-399-0076  
Email to: mai@bergerrealty.com

