

Berger Realty

Since 1928

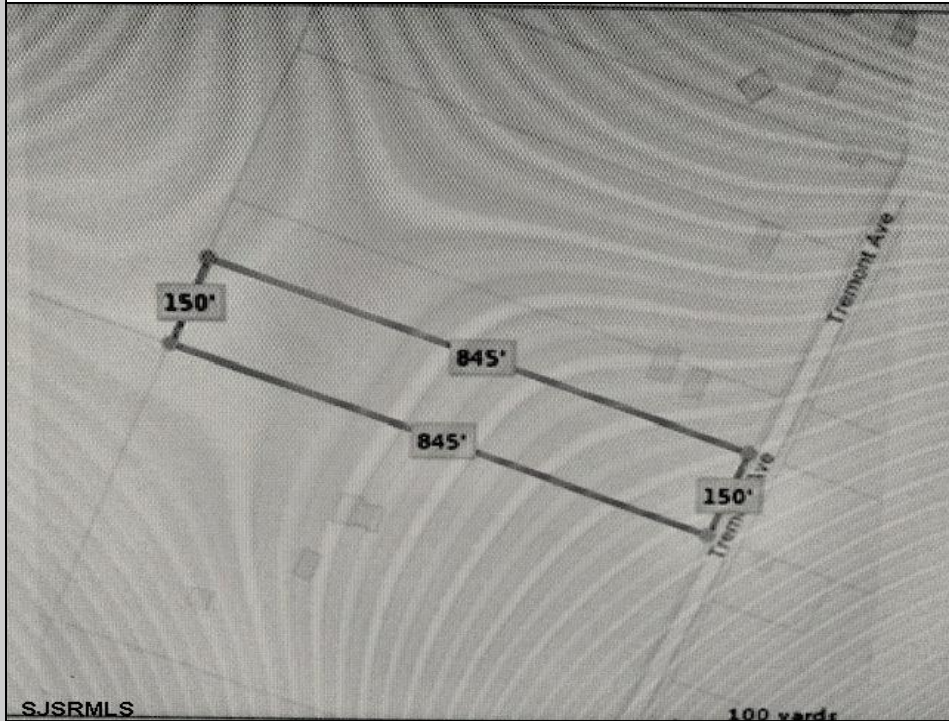


Berger Realty, Inc.
3160 Asbury Avenue
Ocean City, NJ 08226
1-877-237-4371 / 609-399-0076
✉ info@bergerrealty.com



5032 Tremont
Egg Harbor Township, NJ 08234

Asking \$179,000.00



COMMENTS

New on Market! Buldable Lot with Pinelands Approval. Calling are desired Farm to Table Buyers! Developers, Homeowners come build your multi-family, single-family, and/or desired approval use. Buyers are responsible to perform all inspections, zoning, and due diligence. Call LB for details.

PROPERTY DETAILS



Ask for Frank Shoemaker
Berger Realty Inc
3160 Asbury Avenue, Ocean City
Call: 609-399-0076
Email to: fcs@bergerrealty.com

