

Berger Realty

Since 1928



Berger Realty, Inc.
3160 Asbury Avenue
Ocean City, NJ 08226
1-877-237-4371 / 609-399-0076
info@bergerrealty.com



161 Muirfield Court
Mays Landing, NJ 08330

Asking \$157,000.00



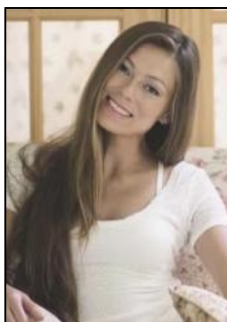
SJSRMLS

COMMENTS

Added incentive first month lot rent paid by the seller. Welcome home to an Adult lifestyle in the 55+ desirable Fairways at Mays Landing, a highly coveted active adult community in the heart of Atlantic County. This home features two bedrooms and two full baths. Enter into Living Room which opens to the Dining Room with hardwood flooring, kitchen with white cabinets and gas stove. Laundry Room leads out to a one car garage with storage above. Master Bedroom with a walk in closet, master bath has two separate vanities, a jacuzzi tub and walk in shower. The second bedroom also has a walk in closet. Home has been freshly painted and a new heater and hot water heater were just installed. Back yard has a large storage shed, ceiling fans throughout the home. Lot rent includes trash, snow removal, common area landscaping, indoor/outdoor pool, gym, billiards and clubhouse entertainment room. Convenient to shopping, expressway, shore points, casinos & Philadelphia. Come take a look!

PROPERTY DETAILS

Exterior Vinyl	OutsideFeatures Shed	ParkingGarage Attached Garage One Car	OtherRooms Dining Room Laundry/Utility Room Primary BR on 1st floor Recreation/Family Storage Attic
AppliancesIncluded Dishwasher Dryer Gas Stove Refrigerator Washer			Basement Crawl Space
AlsoIncluded Kitchens Berger Realty Inc 3160 Asbury Avenue, Ocean City Call: 609-399-0076 Email to: mak@bergerrealty.com			
Cooling Central Electric			HotWater Gas



Sewer
Public Sewer

