

Berger Realty

Since 1928



Berger Realty, Inc.
3160 Asbury Avenue
Ocean City, NJ 08226
1-877-237-4371 / 609-399-0076
✉ info@bergerrealty.com



927 Main
Pleasantville, NJ 08232

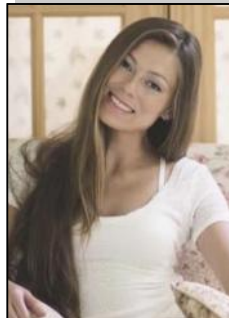
Asking \$310,000.00



COMMENTS

Welcome to Heritage Square Commercial Park, where opportunity meets potential! This standalone building, conveniently located minutes from the AC expressway and situated near Absecon, is a remarkable canvas awaiting your visionary touch to bring it to completion. Originally was a church, this property has been undergoing a transformation into a medical child's daycare facility, making it an ideal opportunity for investors or entrepreneurs in the childcare industry. Nestled in the rear of Heritage Square Office Park, this building offers a unique and versatile space for your vision. Along with ample parking on site, the property provides a welcoming environment for parents and guardians dropping off and picking up their little ones. As you step inside, you'll be greeted by the expansive interior that holds immense potential for creating a safe and nurturing environment. The current layout offers a generous open area, allowing for flexible room arrangement and an abundance of natural light. The high ceilings and large windows enhance the sense of space, fostering an atmosphere of warmth and comfort. With its close proximity to Absecon, and Atlantic City you'll enjoy the benefits of being part of a vibrant community with access to a range of amenities and services. The surrounding area offers schools, parks, shopping centers, and medical facilities, ensuring convenience for both parents and staff. This is a rare opportunity to shape a childcare facility from the ground up and make a lasting impact on the local community and surrounding areas. Don't miss the chance to turn this building into a booming business.

PROPERTY DETAILS



Ask for Margarita Kobilianets
Berger Realty Inc
3160 Asbury Avenue, Ocean City
Call: 609-399-0076
Email to: mak@bergerrealty.com

