

Berger Realty

Since 1928

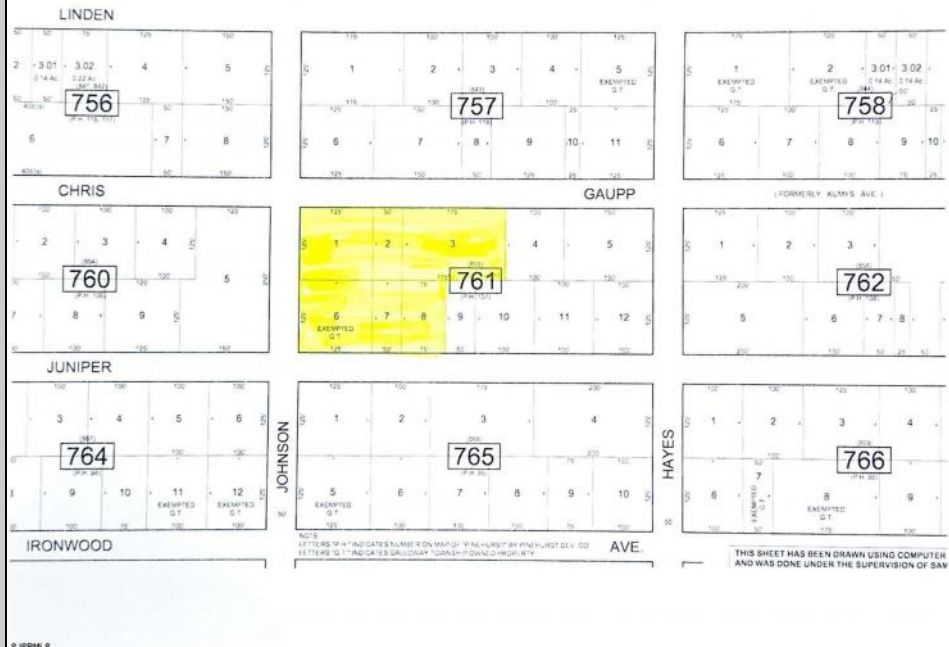


Berger Realty, Inc.
3160 Asbury Avenue
Ocean City, NJ 08226
1-877-237-4371 / 609-399-0076
info@bergerrealty.com



Chris Gaupp
Galloway Township, NJ 08205

Asking \$499,000.00



COMMENTS

Lowest price buildable parcel on Chris Gaupp Rd, 350 feet of frontage, 1.7 acres of high and dry land with no wetlands or wetlands buffers, adjacent property was for sale if you need additional property, situated near Stockton College, Atlantic Regional Medical Centre and Bacharach Institute for Rehabilitation, Atlanticare. Excellent access to Rt 30, Garden State Parkway, Atlantic City Expressway, Atlantic City Airport and Aviation Park. See allowable uses below and setbacks in associated docs. Planned office facilities Additional uses. General sales and related service uses. Personal service and custom craft uses. Food product uses. Food and beverage service uses. Plants, animals and related uses. Financial uses. Office and professional uses. Business service uses. Medical and related uses. Transportation and related uses. Educational uses. Cultural, recreational and entertainment uses. Funeral homes.

PROPERTY DETAILS



Ask for Graham Ginn
Berger Realty Inc
3160 Asbury Avenue, Ocean City
Call: 609-399-0076
Email to: gmg@bergerrealty.com
https://www.ocnj.com

