

# Berger Realty

Since 1928

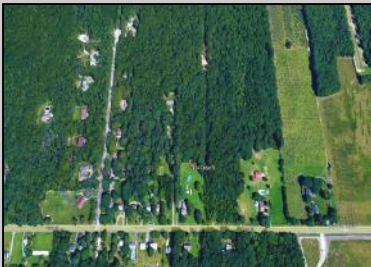


Berger Realty, Inc.  
3160 Asbury Avenue  
Ocean City, NJ 08226  
1-877-237-4371 / 609-399-0076  
info@bergerrealty.com



2424 Cedar Street  
Millville, NJ 08332

Asking \$999,000.00



#### COMMENTS

Discover a prime investment opportunity with this 53-acre industrial land at 2424 Cedar Street, Millville, New Jersey. Boasting a strategic location near key landmarks such as the Millville Airport, Millville Motorsports Raceway, and direct access to Route 55, this property provides unparalleled connectivity to major transportation networks, including the vibrant Jersey Shore region. With a robust local labor pool, it's an ideal choice for businesses seeking a strong workforce. Zoned for industrial use, this expansive land offers flexibility, whether you envision a large single facility or multiple subdivided projects. Essential utilities are already in place, streamlining the development process and saving time and resources. This property represents exceptional value compared to land closer to Route 295, presenting a unique opportunity for developers, manufacturers, logistics companies, or those with a vision for commercial or mixed-use projects. Interested in exploring how this property can work for your business? Let's connect and discuss the possibilities!

#### PROPERTY DETAILS



Ask for Evelyn "Evie" Schweibinz  
Berger Realty Inc  
3160 Asbury Avenue, Ocean City  
Call: 609-399-0076  
Email to: [ems@bergerrealty.com](mailto:ems@bergerrealty.com)

