

Berger Realty

Since 1928



Berger Realty, Inc.
3160 Asbury Avenue
Ocean City, NJ 08226
1-877-237-4371 / 609-399-0076
✉ info@bergerrealty.com



3221 Juniper
Mays Landing, NJ 08330

Asking \$188,000.00

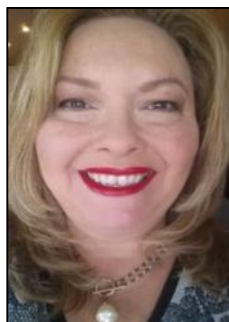


COMMENTS

The Woodlands in Mays Landing. 1st floor Cambridge model includes 2 bedrooms and 1 bath. Completely renovated in 2017. Eat-in kitchen, full size washer dryer, tiles floors throughout (except bedrooms are carpeted). Sliding glass doors to patio and private wooded setting. Currently tenant occupied. Best time to show is after 4:00PM

PROPERTY DETAILS

Exterior Vinyl	ParkingGarage None	OtherRooms Dining Area Eat In Kitchen Laundry/Utility Room Primary BR on 1st floor	InteriorFeatures Pets Allowed
Heating Electric Forced Air	Cooling Central	HotWater Electric	Water Public Water
Sewer Public Sewer			



Ask for Theresa Maina
Berger Realty Inc
3160 Asbury Avenue, Ocean City
Call: 609-399-0076
Email to: tam@bergerrealty.com

